



Allan Morris
estate agents

 **MAYFAIR**
OFFICE GROUP

Flat 15, 2 King Street, Worcester. WR1 2NZ

£180,000

🛏️ 1 🪑 1 🚿 1



A beautifully presented and contemporary style top floor Apartment offering wonderful views of the cathedral as well as close proximity to Worcester City centre.

Accommodation briefly comprising: Entrance Hall, storage cupboard, Utility cupboard, open plan Living, Dining and Kitchen and Bathroom.

LOCATION:

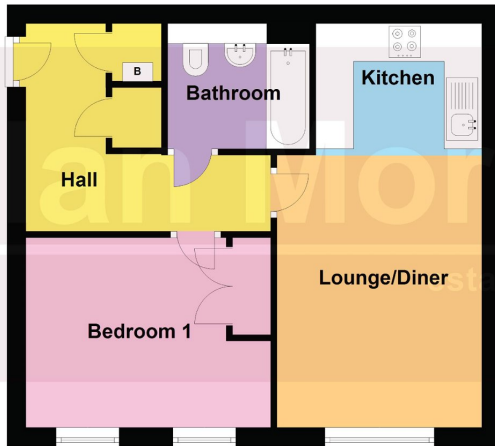
The property is situated in the heart of Worcester City centre, within easy walking distance to shops, restaurants and amenities as well as riverside walks.

Living Room/Dining Area - 6.43m x 3.26m (21'1" x 10'8")

Bedroom - 3.91m x 3.16m (12'9" x 10'4")



Second Floor
Approx. 46.6 sq. metres (501.7 sq. feet)



Total area: approx. 46.6 sq. metres (501.7 sq. feet)

DISCLAIMER - Floor plans shown are for general guidance only. Whilst every attempt has been made to ensure that the floorplan measurements are as accurate as possible, they are for illustrative purposes only.

- No Onward Chain
- Cathedral views
- Beautifully presented contemporary style Apartment
- EPC Rating C
- Top floor
- Allocated parking and permit parking
- Council Tax Band B

