

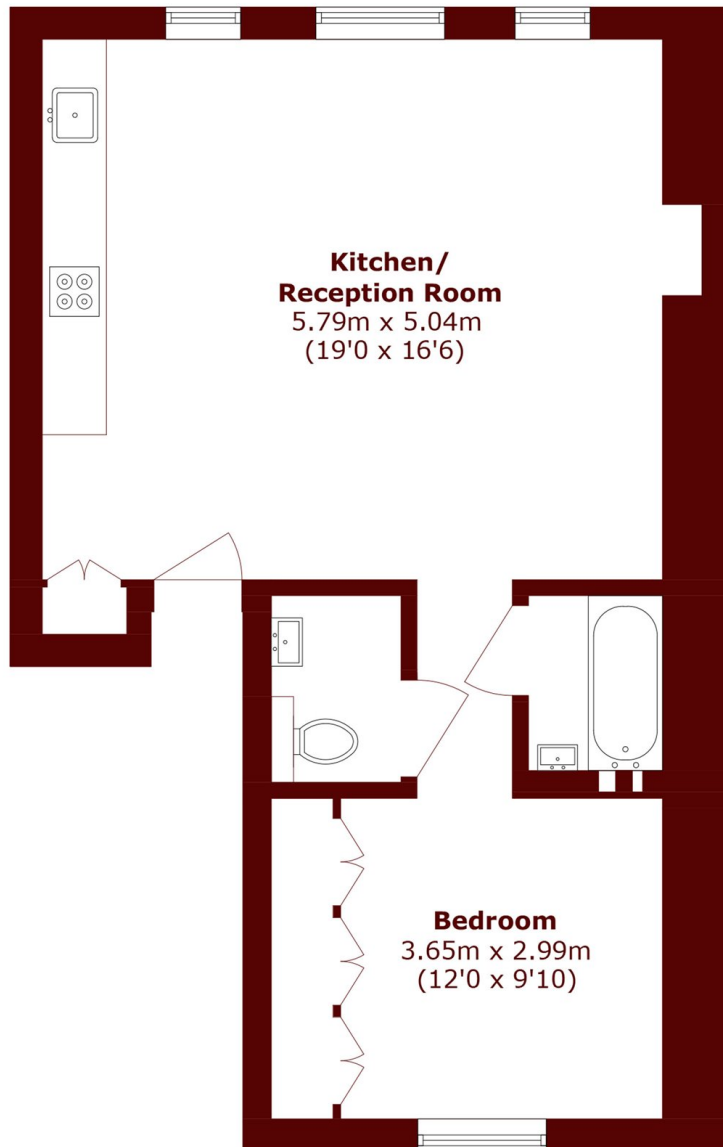


## Ladbroke Square, W11

£725 per week (£3,141 pcm)



- Period Building
- Views over Communal Gardens
- Excellent Storage
- Bright
- Bright reception room
- Envious Location



## Second Floor

Total area (approx.): 51.6 sq. m (555.4 sq. ft)

### Marsh & Parsons Notting Hill

2-6 Kensington Park Road,  
London, W11 3BU  
020 7313 2890