

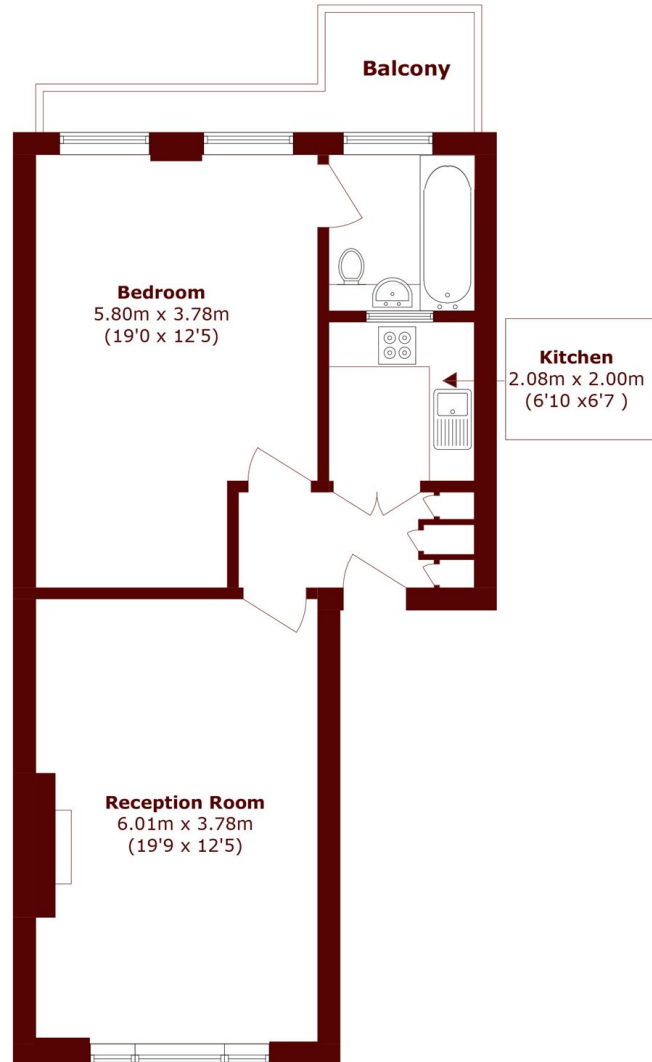


Elgin Crescent, W11

£1,038 per week (£4,498 pcm)



- One Bedroom
- Exacting Standard
- First Floor
- High ceilings
- Communal Gardens
- Envious Location



Total area (approx.): 57.1 sq. m (614.6 sq. ft)

Balcony area (approx.): 5.2 sq. m (54.0 sq. ft)

Marsh & Parsons Notting Hill

2-6 Kensington Park Road,
London, W11 3BU
020 7313 2890