

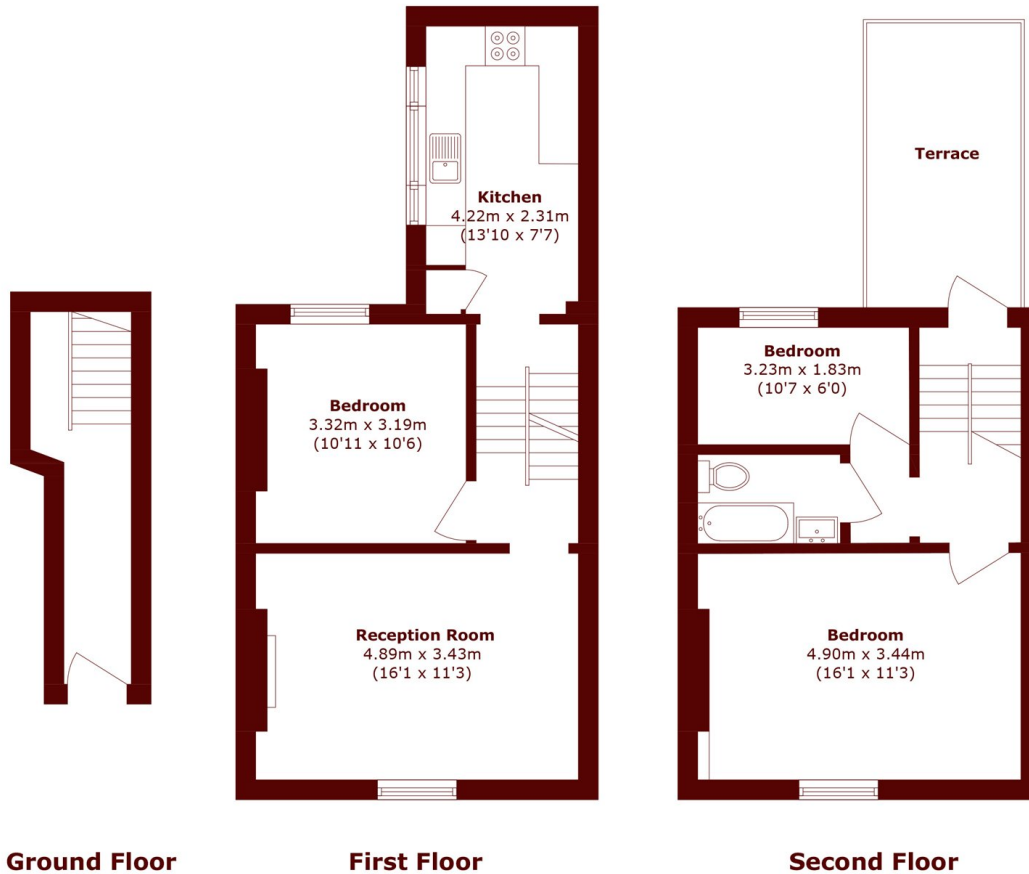


## Portobello Road, W11

£950 per week (£4,116 pcm)



- Three bedrooms
- Newly refurbished
- West facing roof terrace



Total area (approx.): 84.6 sq. m (910.6 sq. ft)  
Terrace area (approx.): 10.2 sq. m (109.8 sq. ft)

## Marsh & Parsons Notting Hill

2-6 Kensington Park Road,  
London, W11 3BU  
020 7313 2890