

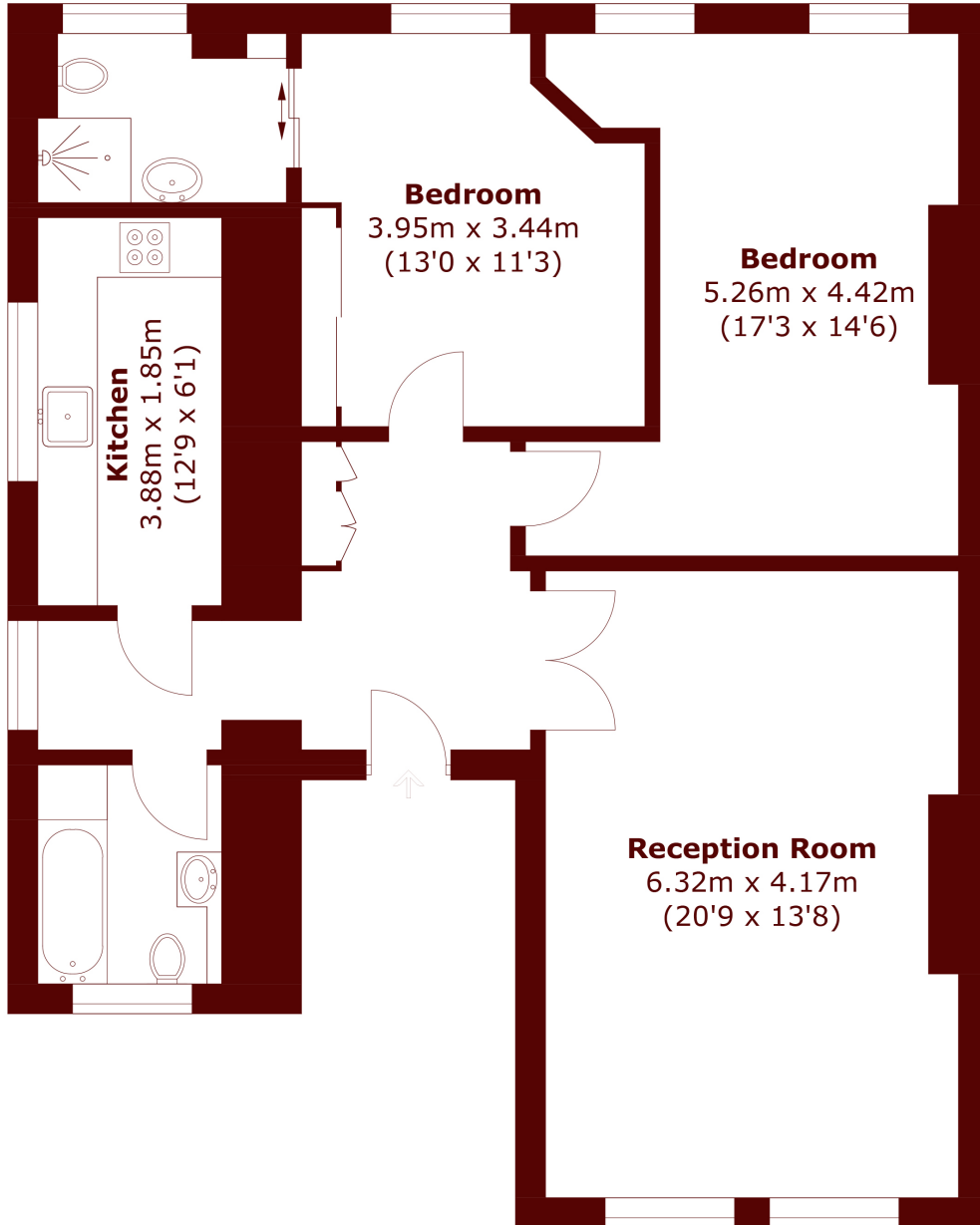


Kensington Park Gardens, W11

£1,295 per week (£5,611 pcm)



- Two bedrooms
- Exacting standard
- Communal gardens



Second Floor

Total area (approx.): 89.7 sq. m (965.5 sq. ft)

Marsh & Parsons Notting Hill

2-6 Kensington Park Road,
London, W11 3BU
020 7313 2890