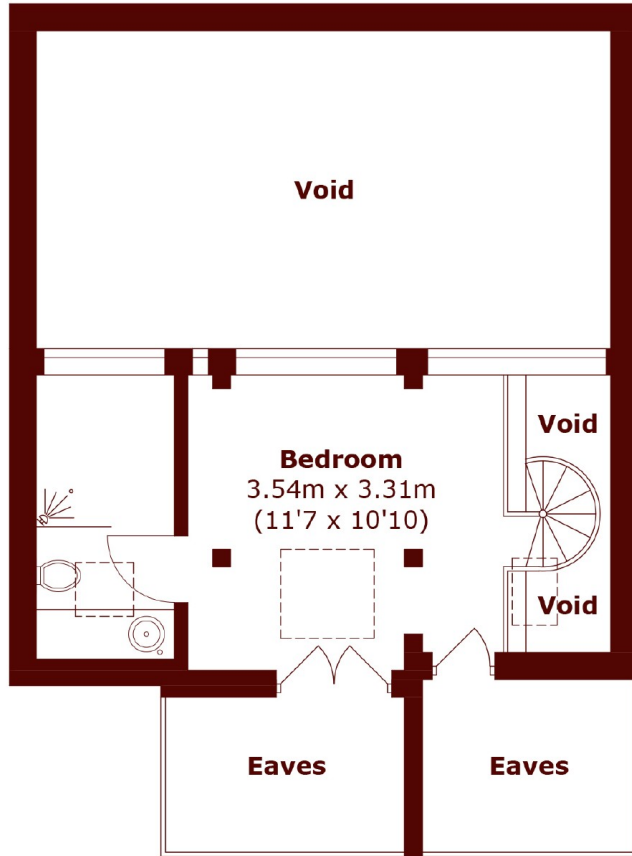


Hyde Park Square, W2

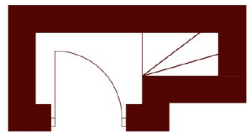
£1,119 per week (£4,996 pcm)

3 2 1 D

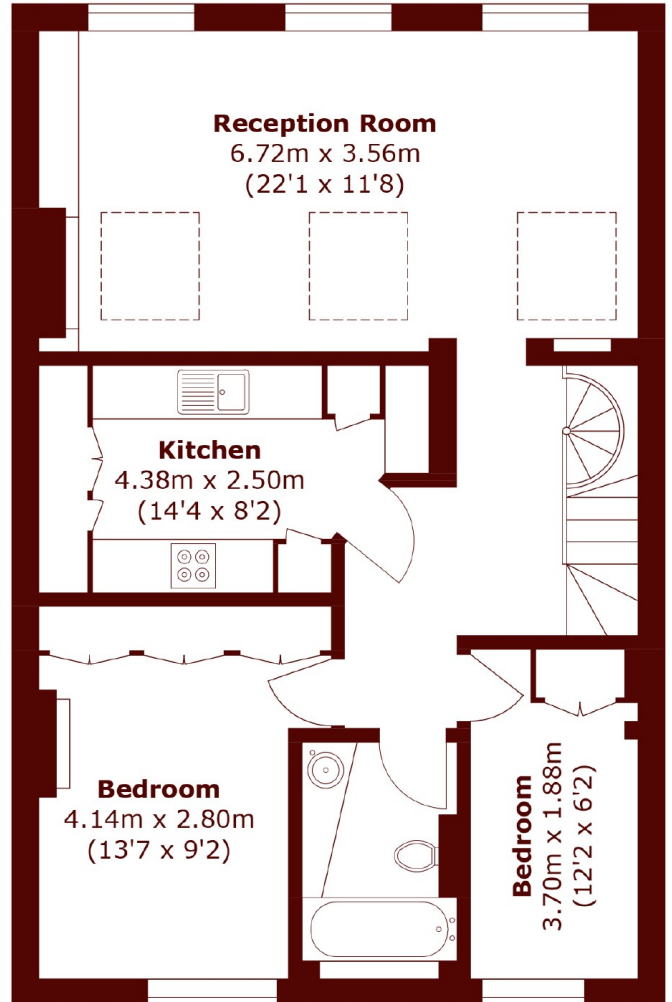
- Three bedrooms
- Stunning views
- Huge living room
- Loft style apartment
- Prestigious address
- Beautiful communal gardens



Fifth Floor



Third Floor



Fourth Floor

Total area (approx.): 91.4 sq. m (983.7 sq. ft)
(Excluding Eaves / Void)

Marsh & Parsons Notting Hill

2-6 Kensington Park Road,
London, W11 3BU
020 7313 2890