



Powis Gardens, W11

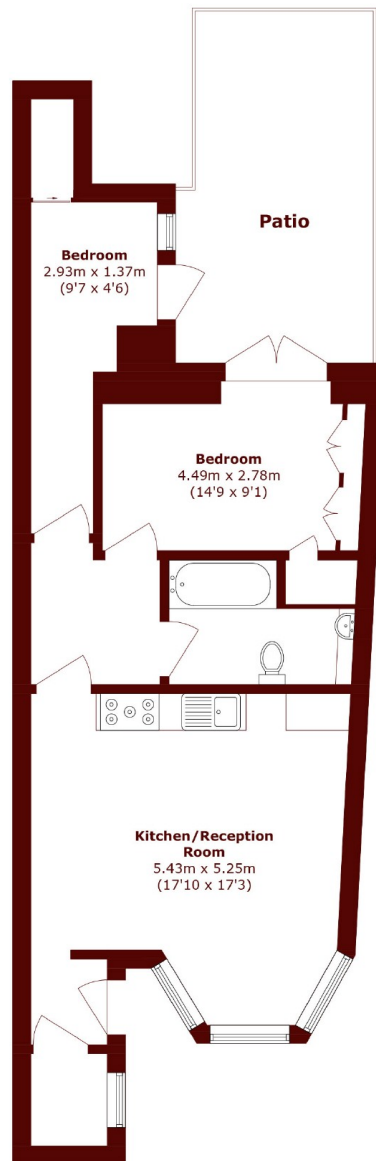
£975 per week (£4,766.66 pcm)



- Garden Apartment
- Two Bedrooms

- Wooden Floors
- Private Garden

- Open plan kitchen
- Period Conversion



Lower Ground Floor

Total area (approx.): 62.9 sq. m (677.0 sq. ft)

Patio area (approx.): 17.7 sq. m (190.5 sq. ft)

Marsh & Parsons Notting Hill

2-6 Kensington Park Road,
London, W11 3BU
020 7313 2890