



Kildare Terrace, W2

£6,500,000



- End of Terrace
- Wide House
- Excellent Entertaining space
- Westerly Garden
- High Ceilings
- Potential to Reconfigure





ABOUT THE PROPERTY

A wonderful and rare opportunity to acquire a five/six bedroom end of terrace house on one of Notting Hill's most sought after roads. Configured over four floors and benefiting from a generous west facing garden and separate roof terrace, this stunning, wider than average house, currently in need of upgrading, offers fantastic scope to be transformed into an enviable home. The ground floor opens onto a spacious hallway with an impressive staircase, a grand reception room with stunning high ceilings, which interconnects to the large kitchen/dining room with floor to ceiling windows leading on to the westerly terrace. The lower ground floor features a large double bedroom, shower room, utility room, an additional double bedroom/reception room with access to the garden. The upper two floors of the house boast a further four double bedrooms and two bathrooms.

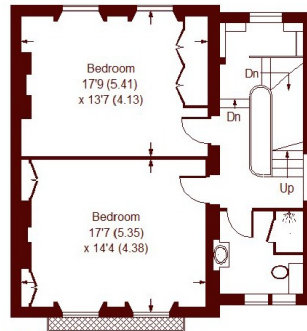


Kildare Terrace is a truly stunning location, superbly positioned just north of Westbourne Grove with a wealth of boutique shops, cafés and restaurants just moments away, whilst there are also a host of excellent transport links within close proximity, including the District and Circle lines at Bayswater and the Central line at Notting Hill Gate. The vast green open space of Hyde Park is also within close proximity.

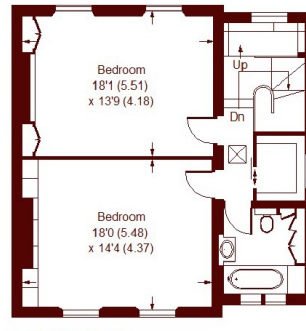


Kildare Terrace, W2

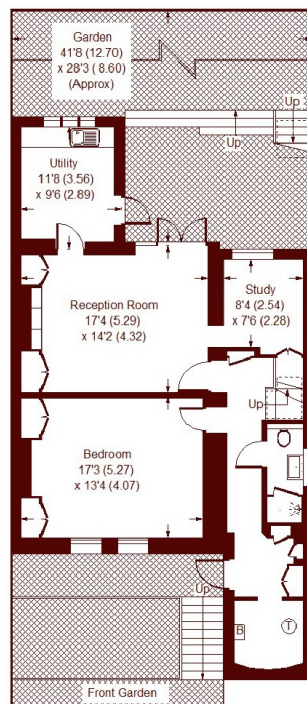
APPROX. GROSS INTERNAL FLOOR AREA
3093 SQFT / 287.4 SQM



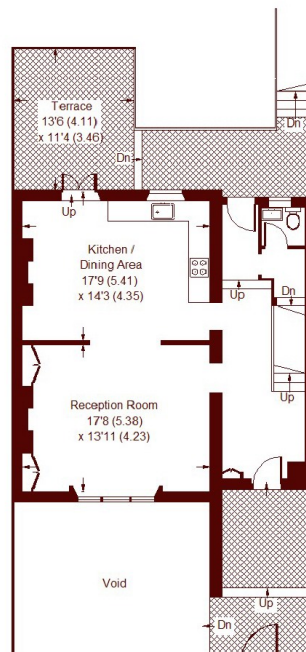
FIRST FLOOR



SECOND FLOOR



LOWER GROUND FLOOR



RAISED GROUND FLOOR

= REDUCED HEADROOM BELOW 1.5 M / 5'0

Whilst every attempt has been made to ensure the accuracy of the floor plan, measurements are approximate and not to scale.
No guarantee is given on the total square footage of the property quoted on the plan. Figures given are for guidance.
Plan is for illustration purposes only, not to be used for valuations.

Marsh & Parsons Notting Hill

2-6 Kensington Park Road,
London, W11 3BU
020 7313 2890

We aim to make our particulars both accurate and reliable. However, they are not guaranteed; nor do they form part of an offer or contract. If you require clarification on any points then please contact us, especially if you're traveling some distance to view. Please note that appliances and heating systems have not been tested and therefore no warranties can be given as to their good working order.