



## Bramley Road, W10

£825,000

2 2 1 D

- First Floor
- Open Plan
- Two En-Suites
- Double Aspect
- Historic Conversation
- High Ceiling Height









## ABOUT THE PROPERTY

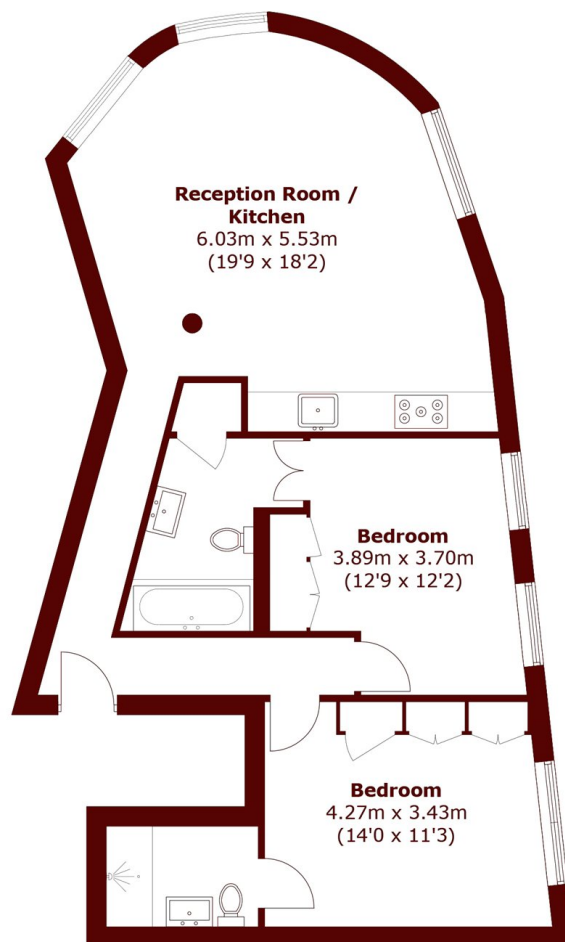
A well-presented two bedroom first floor apartment within a converted Victorian pub, offering a spacious open plan reception, double aspect windows, two en suite bedrooms and a rich cinematic history.

Set within the former Bramley Arms, this attractive apartment has a bright reception room with large windows and wooden floors, flowing naturally into an open plan kitchen featuring copper-fronted cabinetry and integrated appliances. The space feels refined and welcoming.

Both bedrooms face towards the peaceful Freston Road and offer generous proportions. The principal bedroom includes built-in wardrobes and an en suite shower room, while the second bedroom also features its own en suite bathroom and fitted storage, offering excellent versatility for guests or sharers.

The building has a distinctive cultural story. Once a Victorian public house, the Bramley Arms became one of London's most recognisable film locations, appearing in *The Lavender Hill Mob*, *The Blue Lamp*, *Quadrophenia* and mid-century classics. Converted in the late 1980s, it retains its period character while offering modern, well-designed homes close to Portobello Road, Holland Park and Latimer Road station.





## First Floor

Total area (approx.): 76.0 sq. m (818.1 sq. ft)

### Marsh & Parsons North Kensington

136 Lancaster Road, London,  
W11 1QU  
020 7313 8350