



## Highlever Road, W10

£300,000



- Top Floor Apartment
- Turnkey Living

- High Ceilings
- Guest WC

- Private Terrace
- Circa 7% Yield







## ABOUT THE PROPERTY

This newly refreshed studio apartment on Highlever Road offers a turnkey space with high ceilings, private terrace, modern bathroom, hallway storage.

Step into a refreshed studio with high ceilings and stylish wooden flooring, bathed in natural light, ideal for urban dwellers or first-time buyers seeking a ready home.

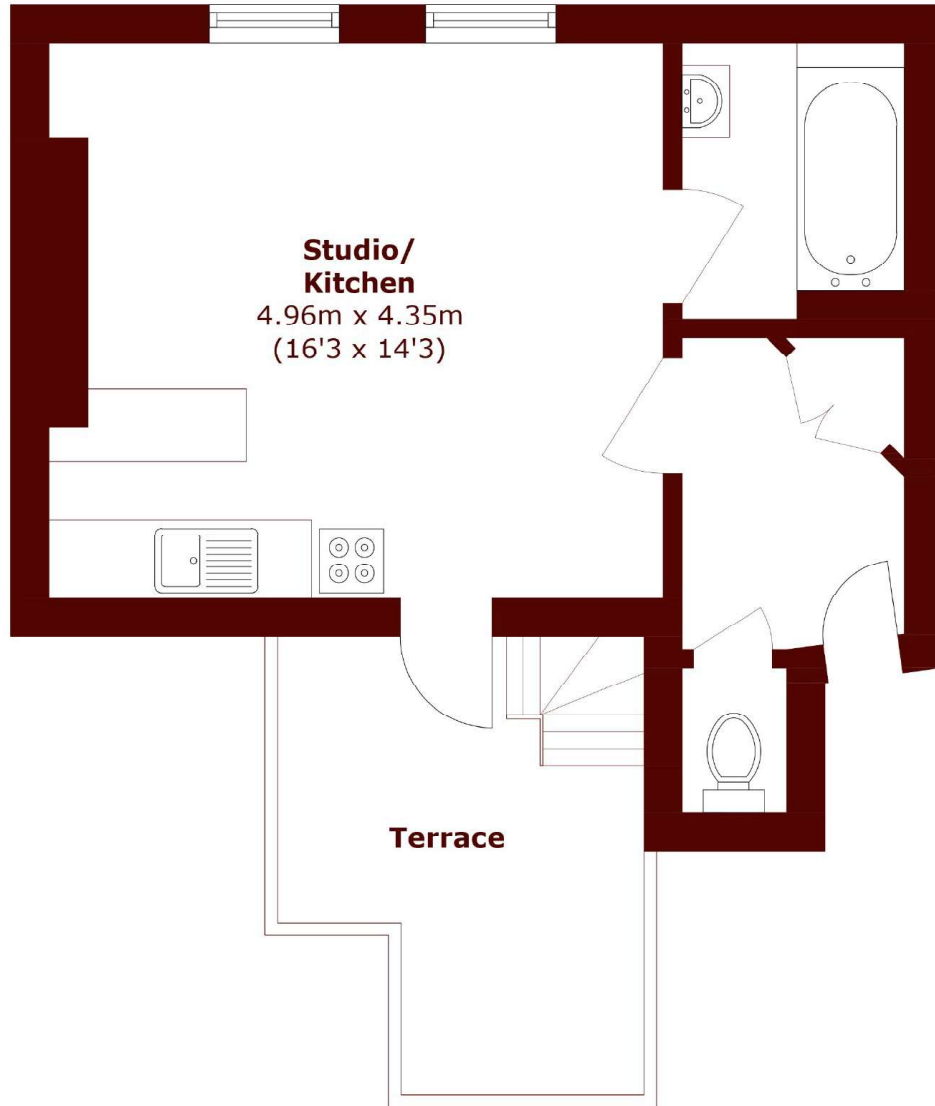
The modern bathroom gleams with sleek tiles, a guest WC adds practicality, and the private terrace offers a serene spot for relaxation, all move-in ready.

With hallway storage, share of freehold and a potential circa 7% rental yield, this apartment delivers value and comfort in a vibrant North Kensington setting.

Golborne Road and Portobello Road buzz with markets and unique shops, while Ladbroke Grove Underground provides swift links to central London's attractions.







Total area (approx.): 30.8 sq. m (331.5 sq. ft)

Terrace area (approx.): 8.9 sq. m (95.7 sq. ft)

## Marsh & Parsons North Kensington

136 Lancaster Road, London,  
W11 1QU  
020 7313 8350