



Ladbroke Grove, W10

£775,000



- Second Floor Flat
- Beautifully Presented

- Spacious Open Plan
- One Double Bedroom

- Natural Light Throughout
- Prime Location





ABOUT THE PROPERTY

Situated on the second floor of an attractive period conversion on Ladbroke Grove, this beautifully presented one-bedroom apartment spans approximately 606 sqft and combines generous proportions with stylish, contemporary finishes.

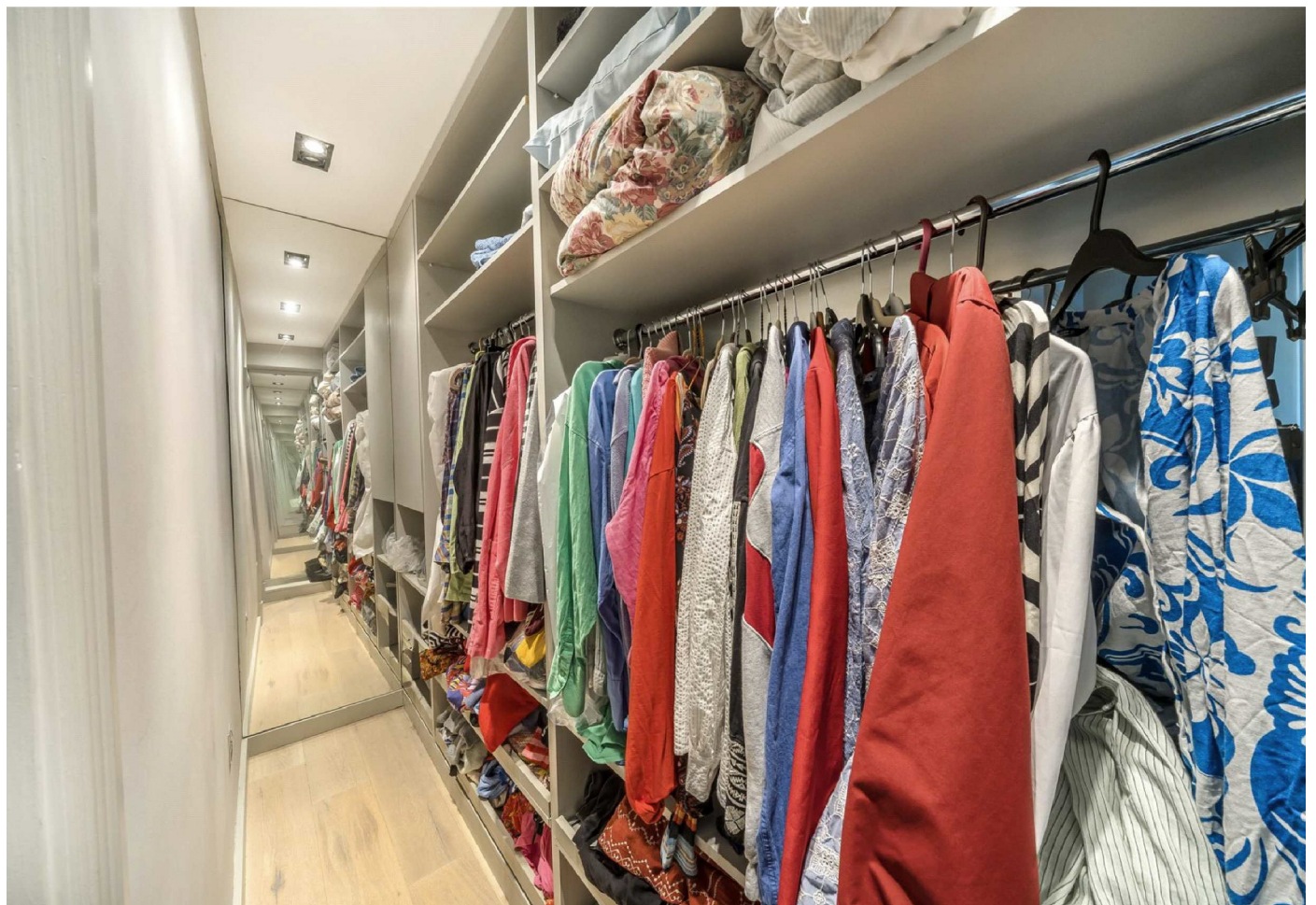
The heart of the home is a striking open-plan reception room measuring over 18 feet by 18 feet, boasting high ceilings, large sash windows and a modern integrated kitchen - ideal for both entertaining and relaxing.

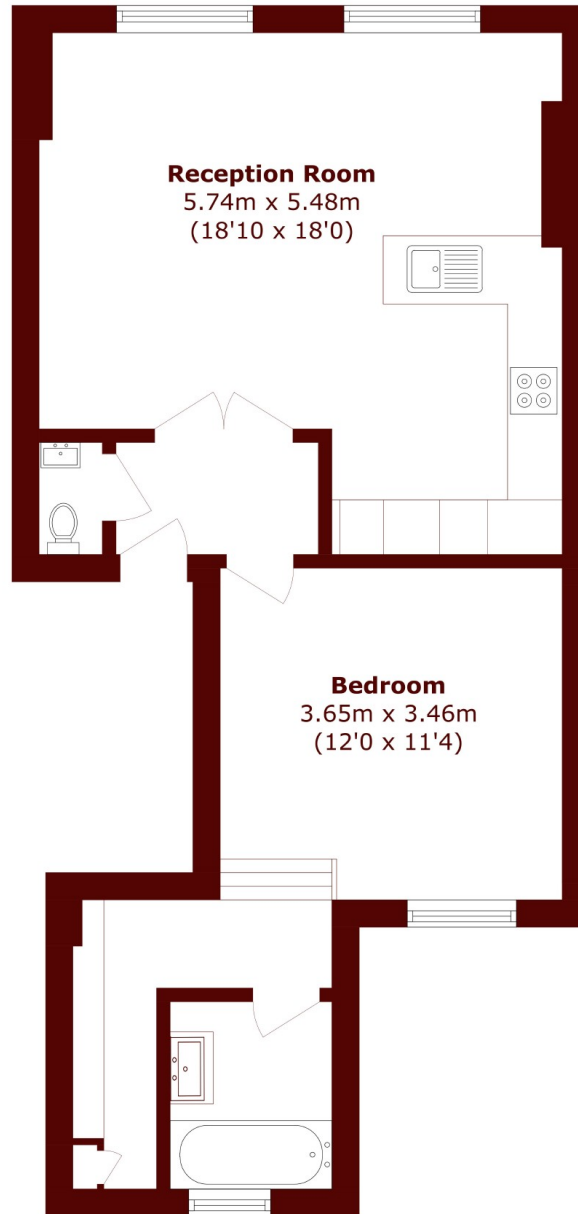
To the rear, the well-sized double bedroom includes a luxurious walk-in wardrobe and a stylish en suite with both bath and shower. There is also a separate WC off the hallway for guests.



Located on the second floor, the apartment enjoys an elevated outlook and excellent natural light. Finished to a high standard, it combines comfort with thoughtful, modern design.

Perfectly located for the eclectic shops, restaurants, and markets of Portobello Road and Golborne Road, and within walking distance to Ladbroke Grove and Westbourne Park stations, this home offers an exceptional lifestyle in one of West London's most iconic neighbourhoods.





Total area (approx.): 56.3 sq. m (606.0 sq. ft)

Marsh & Parsons North Kensington

136 Lancaster Road, London,
W11 1QU
020 7313 8350