

nicholsons



20 Elvetham Crescent

, Fleet, GU51 1BU

£1,750 Per month

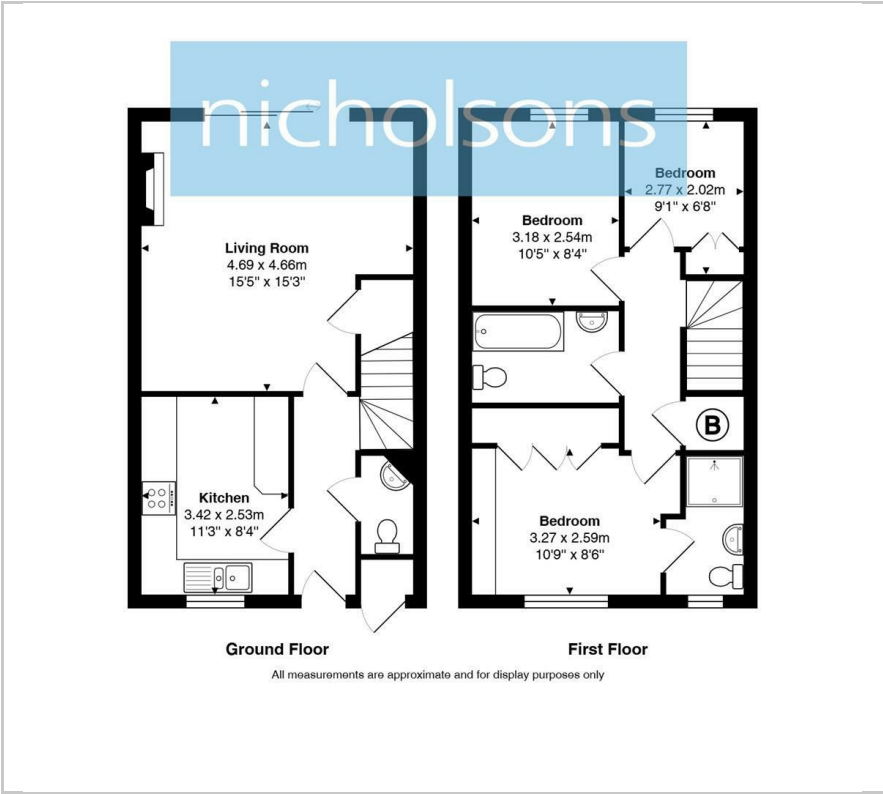
A three bedroom family home situated on the popular Elvetham Heath development. The property has an ensuite to the master bedroom, further family bathroom and cloakroom, double glazed windows, radiator central heating, enclosed rear garden, garage to the rear of the property. Views over 'The Green', available immediately.

Viewing

Please contact our Fleet Office on 01252 628400 if you wish to arrange a viewing appointment for this property or require further information.



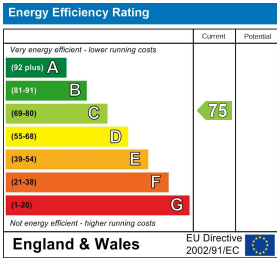
Floor Plan



Area Map



Energy Efficiency Graph



These particulars, whilst believed to be accurate are set out as a general outline only for guidance and do not constitute any part of an offer or contract. Intending purchasers should not rely on them as statements of representation of fact, but must satisfy themselves by inspection or otherwise as to their accuracy. No person in this firms employment has the authority to make or give any representation or warranty in respect of the property.