



20 Giffard Lane

, Fleet, GU51 1LA

£1,650

Nicholsons Estate Agents welcome to the market a three bedroom terraced property which has the benefit of having new carpets and has also been re-decorated throughout. The property itself is pleasantly situated on the much favoured Elvetham Heath development in Fleet overlooking green to the front with the benefit of car port to the rear and being within a convenient distance of Fleet mainline railway station.

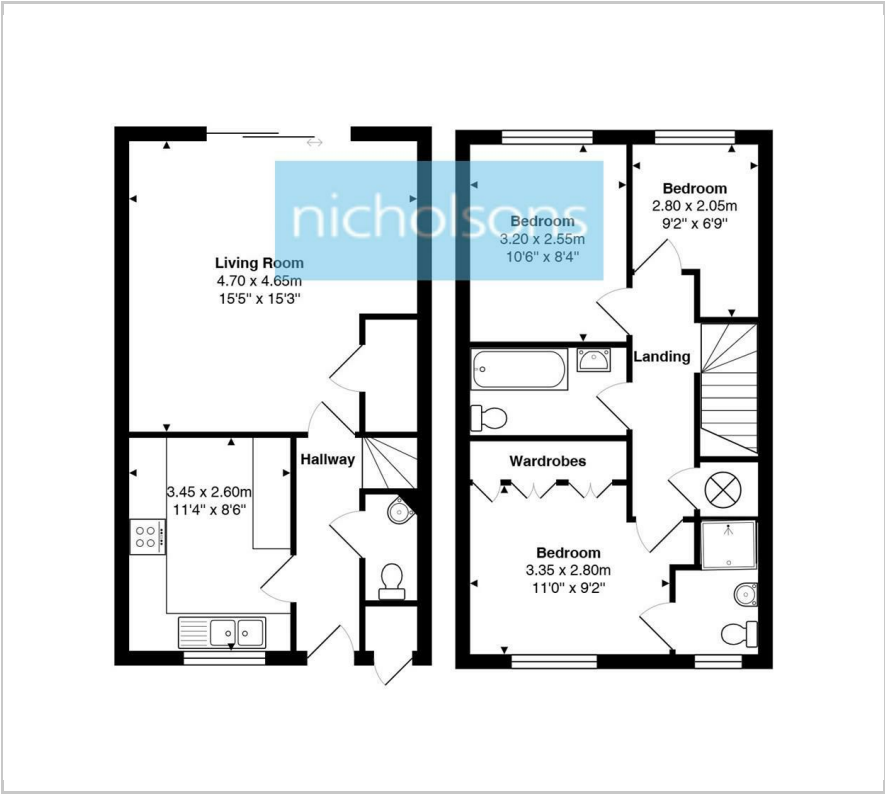
- Three Bedroom Mid Terraced House
- Car Port Parking
- En-Suite To Master Bedroom
- No Onward Chain
- Private Rear Garden
- Popular Elvetham Heath Development
- Walking Distance To Local Schools
- Redecorated & New Carpets Throughout
- Walking Distance To Fleet High Street
- Walking Distance To Fleet Train Station

Viewing

Please contact our Fleet Office on 01252 628400 if you wish to arrange a viewing appointment for this property or require further information.



Floor Plan



Area Map



Energy Efficiency Graph



These particulars, whilst believed to be accurate are set out as a general outline only for guidance and do not constitute any part of an offer or contract. Intending purchasers should not rely on them as statements of representation of fact, but must satisfy themselves by inspection or otherwise as to their accuracy. No person in this firms employment has the authority to make or give any representation or warranty in respect of the property.