

nicholsons



3 Falconer Road

, Fleet, GU51 1LE

£1,875 Per month

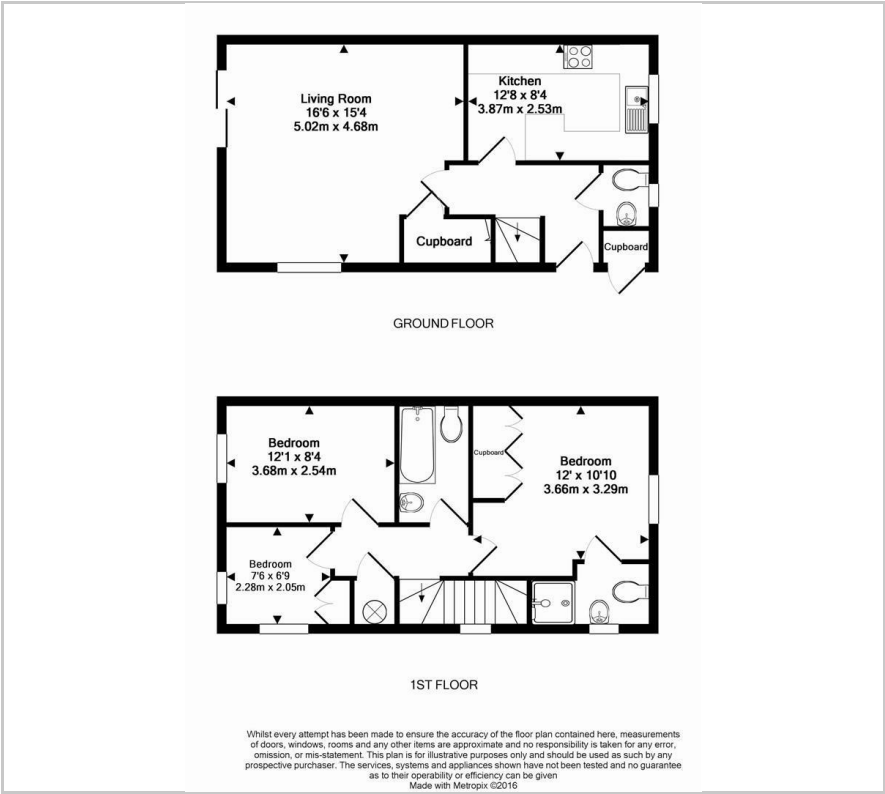
A three bedroom semi detached property situated on the popular Elvetham Heath development. The property has an ensuite to the master bedroom, family bathroom, and further downstairs cloakroom, living room and separate kitchen. Outside there is an enclosed rear garden and driveway, additionally the former garage has been converted to provide an office space and utility area.

Viewing

Please contact our Fleet Office on 01252 628400 if you wish to arrange a viewing appointment for this property or require further information.



Floor Plan



Area Map



Energy Efficiency Graph



These particulars, whilst believed to be accurate are set out as a general outline only for guidance and do not constitute any part of an offer or contract. Intending purchasers should not rely on them as statements of representation of fact, but must satisfy themselves by inspection or otherwise as to their accuracy. No person in this firms employment has the authority to make or give any representation or warranty in respect of the property.