

nicholsons



Orchard Fields  
Fleet, GU51

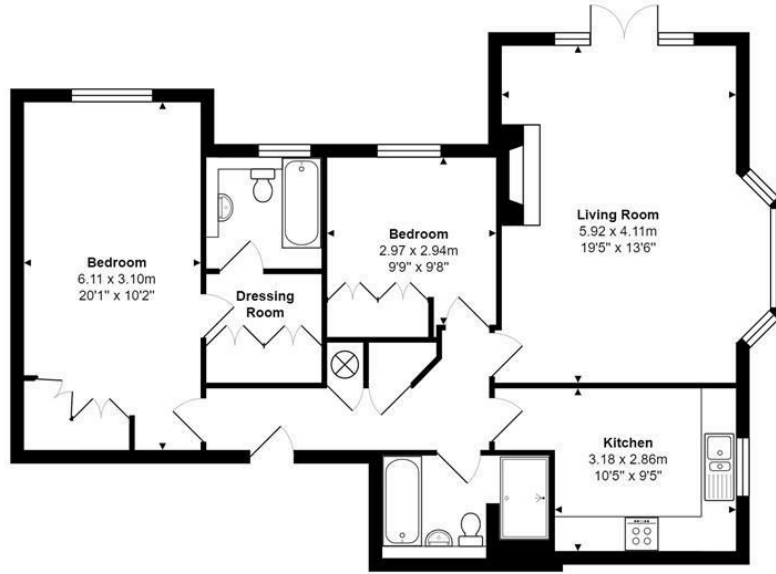
£1,595 Per month



nicholsonsproperty.co.uk

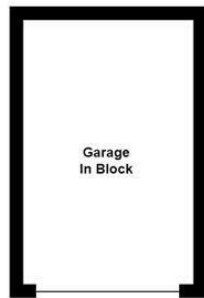


# Floorplan



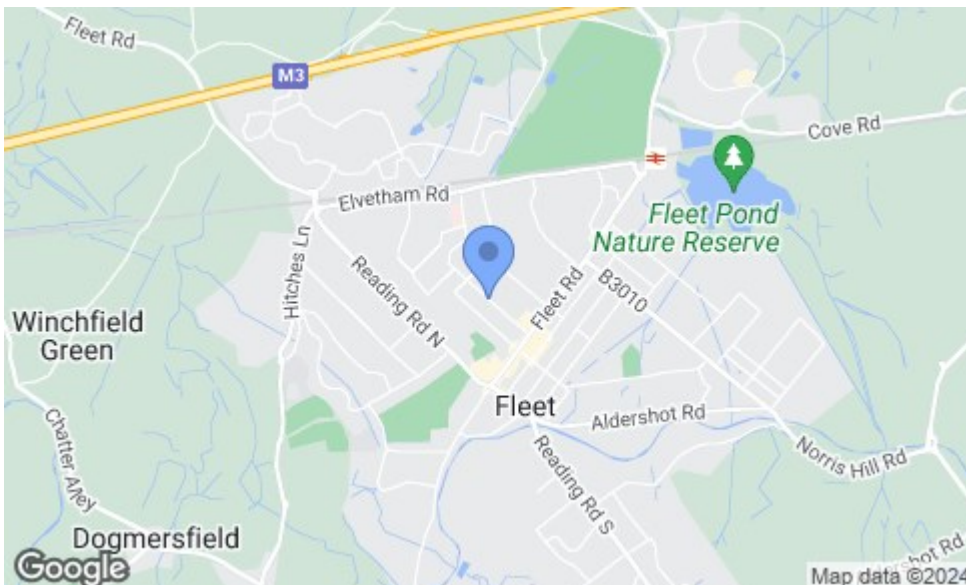
**Ground Floor**

All measurements are approximate and for display purposes only



**Separate Block**

# Area Map



# Energy Efficiency Chart

Energy Efficiency Rating		Current	Potential
<i>Very energy efficient - lower running costs</i>			
(92 plus) <b>A</b>			
(81-91) <b>B</b>			
(69-80) <b>C</b>		69	75
(55-68) <b>D</b>			
(39-54) <b>E</b>			
(21-38) <b>F</b>			
(1-20) <b>G</b>			
<i>Not energy efficient - higher running costs</i>			
<b>England &amp; Wales</b>		EU Directive 2002/91/EC	