

TOTTERIDGE VILLAGE TOTTERIDGE



CARDINALS, 23 TOTTERIDGE VILLAGE

TOTTERIDGE, LONDON, N20 8PN

Cardinals is an impressive detached family home set within a prominent position in the heart of Totteridge Village.

As you enter this beautiful home you are within a welcoming entrance hall which leads you onto the principal reception rooms which include a double aspect drawing room and dining room with a feature bay with doors leading to the garden. Beyond the drawing room is an office and family room, whilst on the other side of the home is a spacious double aspect kitchen/breakfast room which in turn leads onto the sitting room and utility. All of these rooms offer views over the beautiful gardens.

The house is approached via an extensive drive which is shielded from the road by a number of mature trees and leads to a double length garage.

The house sits on a plot in excess of ½ an acre and the south west facing garden is mainly laid to lawn with an extensive terrace running along the rear of the property and leading to the heated swimming pool. A wide variety of trees and shrubs to the borders provide a wonderfully private and tranquil setting.

Totteridge Village is a highly popular address with convenient access to the open spaces of Darlands Nature Reserve and Totteridge Green. The Orange Tree Public House is nearby as is first class schooling. There is a wide choice of shops and restaurants in Whetstone, and transport links are served by the nearby A1 (M), M1 and M25, with Totteridge and Whetstone underground station (Northern Line) nearby.







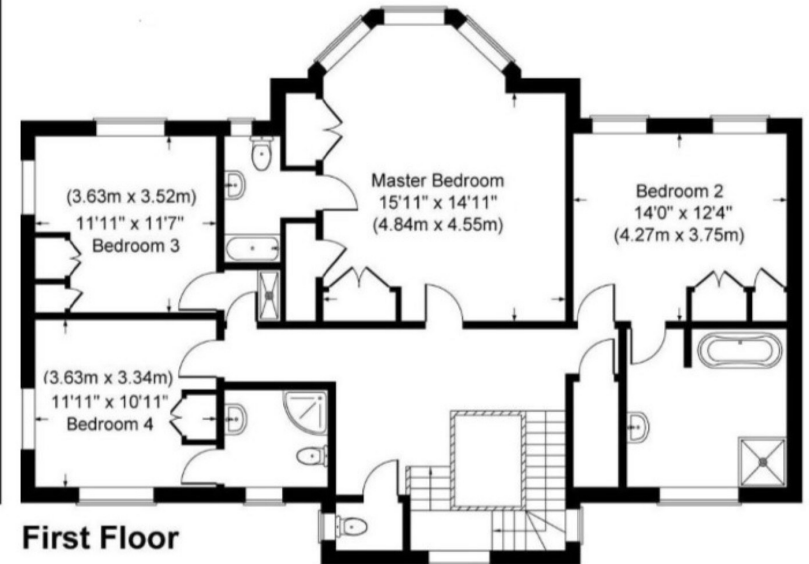
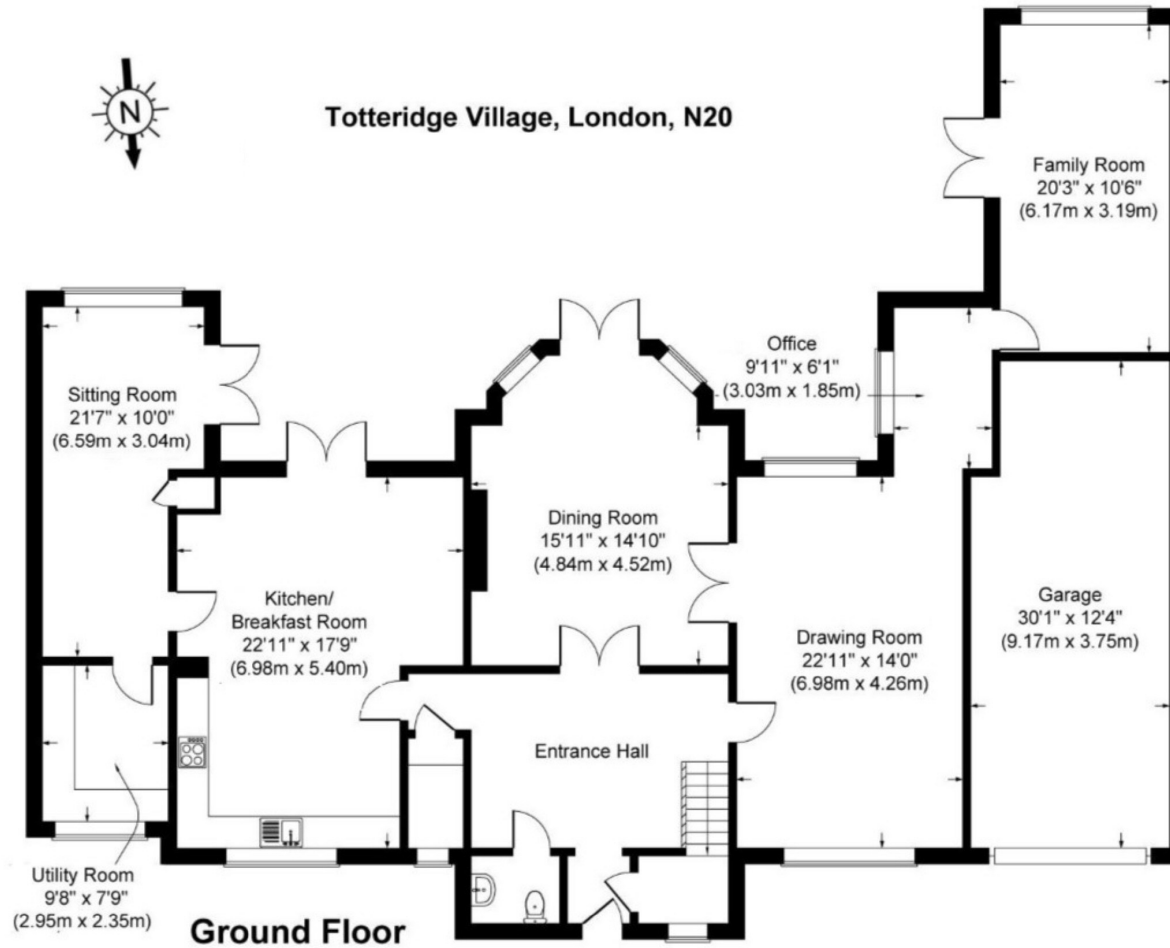








Totteridge Village, London, N20



STATONS

www.statons.com

HADLEY WOOD

10 CRESCENT WEST
HADLEY WOOD
HERTFORDSHIRE, EN4 0EJ
020 8440 9797
hadley@statons.com

