

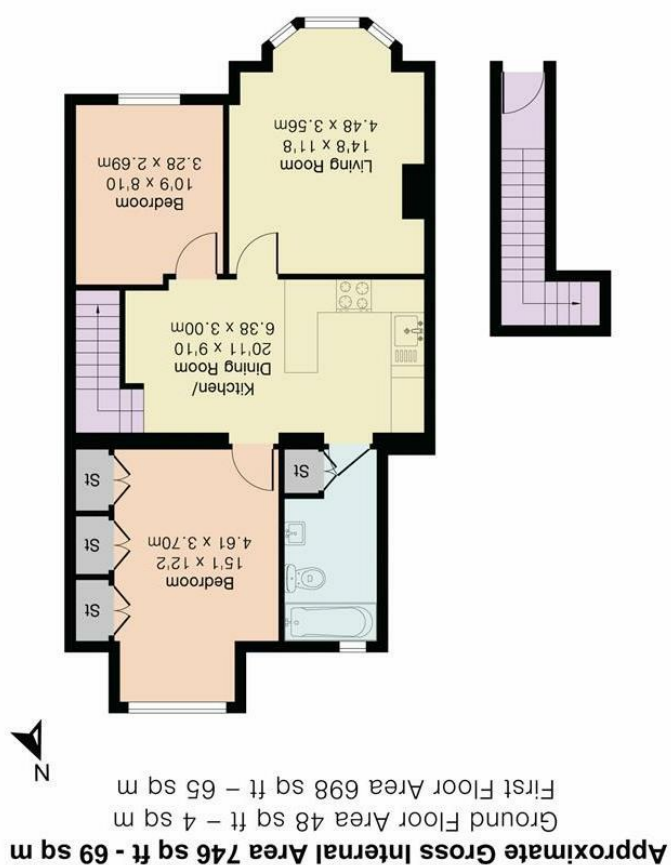

 The Property Ombudsman
 
 arla | propertymark
 
 PROTECTED
 
 arla | propertymark
 
 PROTECTED

Floor plan produced in accordance with RICS Property Measurement 2nd Edition. Although Pink Pin Ltd ensures the highest level of accuracy, measurements of doors, windows and rooms are approximate and no guarantee is given for error, omission or misstatement. These plans are for representation purposes only and no responsibility is given on the total or partial coverage of the property within this plan. The figure icon is for initial guidance only and should not be relied on as a basis of valuation.



gibson lane

Ground Floor First Floor



34 Richmond Road
Kingston upon Thames
Surrey
KT12 5ED
www.gibsonlane.co.uk
Tel: 020 8546 5444

gibson | jane





Guide Price £475,000

- Two Double Bedrooms
 - Spacious First Floor Flat
 - Access to Massive Loft Area with Potential to Convert
 - No Service Charge
 - Peppercorn Ground Rent
 - 150 Years Remain on Lease
 - Council Tax Band - C
 - EPC Rating - C
 - No Chain
- * Tenure: Leasehold
- * Local Authority: Kingston upon Thames

Description

Located in this popular and quiet location this lovely converted flat is in the heart of Norbiton and within an easy walk to the train station and Norbiton village which has a charming array of shops.

Offering a spacious 746 square feet the property features high ceilings, huge loft space and the natural tones compliment this light and airy two bedroom first floor maisonette.

This well balanced property has been lovingly renovated to a high standard and is full of natural charm. The property comprises, private front entrance, two genuine double bedrooms, family bathroom with utility/storage area, bay fronted reception room, with wooden floor linking into the semi-open plan kitchen/reception.

There is access to a massive loft area that has a huge amount of storage and holds potential to increase the size of the property by extending into the loft with permission from the freeholder, potentially creating a split level three bed maisonette.

This property is being sold with no onward chain.

A viewing is highly recommended to see what this lovely property has to offer.

Situation

Neville Road is a sought after residential street conveniently located moments from Norbiton Village with its select range of shops and rail station giving direct access into Waterloo. The A3 which serves both London and the M25 is easily accessible by car.

The standard of schooling in the immediate area is excellent within both the private and state sector. The area has an extensive range of leisure facilities including golf courses, tennis clubs, riding schools and private and public health clubs.

