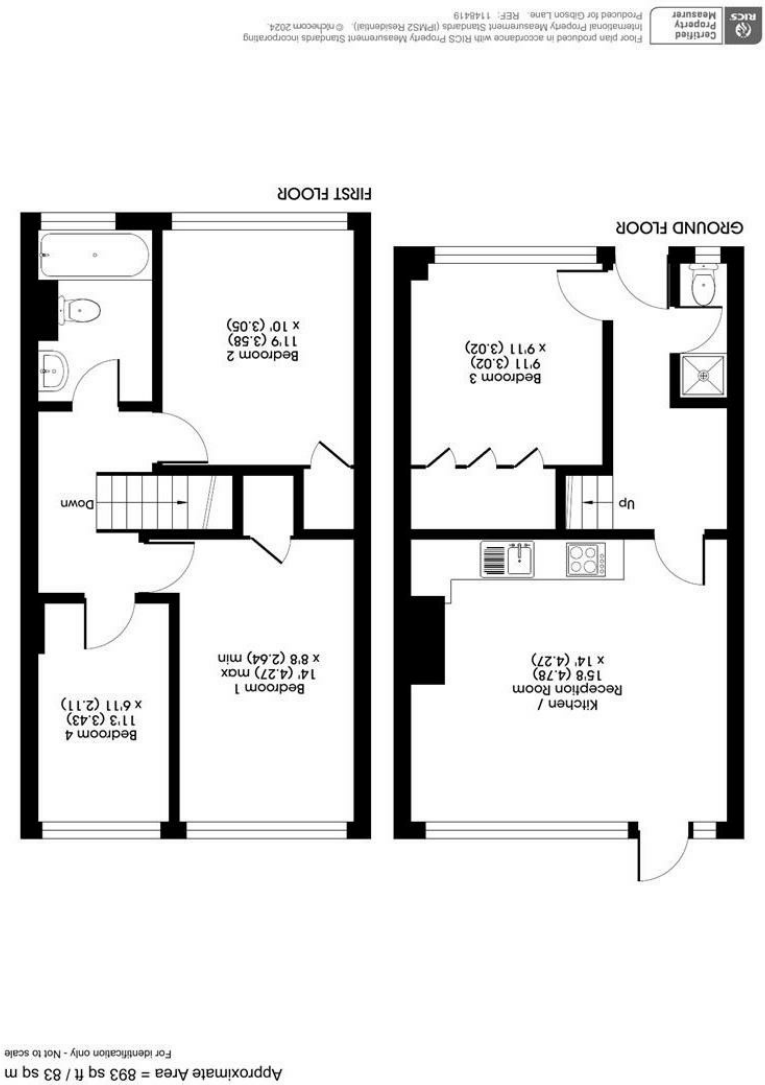
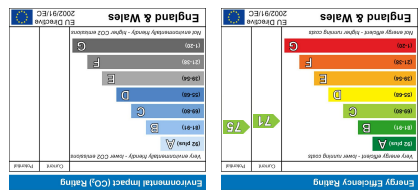


**Important Information**  
All appliances listed in these details are only 'as seen' and have not been tested by Gibson Lane, nor have we sought certification of warranty or service, unless otherwise stated. Measurements, areas and distances are approximate. Floor plans and photographs are for guidance purposes only and must not be relied upon for any purpose. These details are offered on the understanding that all negotiations are made through this company. Neither these particulars, nor verbal representations, form part of any offer or contract, and their accuracy cannot be guaranteed.



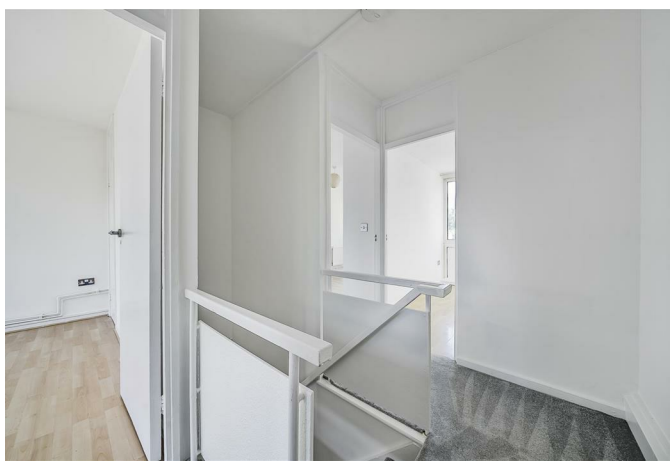
34 Richmond Road  
Kingston upon Thames  
Surrey  
KT2 5ED  
www.gibsonlane.co.uk  
Tel: 020 8546 5444

gibson lane

Sherfield Gardens,  
Roehampton, London, SW15 4PB



- AVAILABLE 23rd AUGUST 2025
- Refurbished 4 Bedroom Split-Level Flat
- Brand New Modern Kitchen With Breakfast Bar
- 3 Double Bedrooms
- 1 Single Bedroom
- Tiled Bathroom With Bath & Shower
- Additional Shower Room
- Unfurnished
- EPC Rating - C
- Council Tax Band - C



£2,450 Per Calendar Month

Sherfield Gardens,  
Roehampton,  
London,  
SW15 4PB



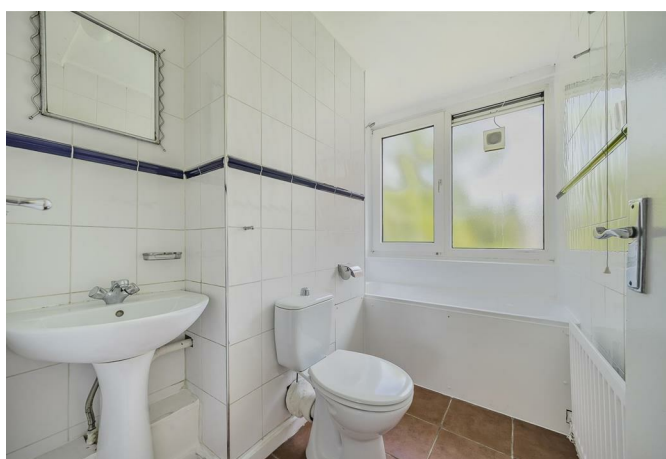
## Description:

\* AVAILABLE 23rd AUGUST 2025\*

Gibson Lane present to the market a lovely newly refurbished four bedroom first floor maisonette providing open-plan living space. The property is presented in excellent condition have been redecorated throughout, new carpets & flooring installed along with brand new kitchen. The open-plan kitchen/reception room offers spacious living and benefits from a breakfast bar. The ground floor further provides a double bedroom and shower room. Upstairs you are presented with two double bedrooms, one single bedroom and a tiled bathroom with bath & shower. Further benefits of this great property include all amenities just a short walk away and an ideal location for students who attend Whitelands, Froebel, Roehampton Vale and Kingston Hill Campuses.

## Location:

Sherfield Gardens is located just a short walk from the ever popular Richmond Park. The location is well served with many different transport links which include buses to Putney, Hammersmith and Kingston, the A3 is in very close by which provides quick access in and out of London. Close to various Universities and Queen Mary's Hospital.



**Furnishing:** Unfurnished  
**Local Authority:** Wandsworth  
**Council Tax Band:** C  
**Available Date:** 23rd August 2025  
**Deposit:** £2,826  
**Tenancy Term:** Long Term