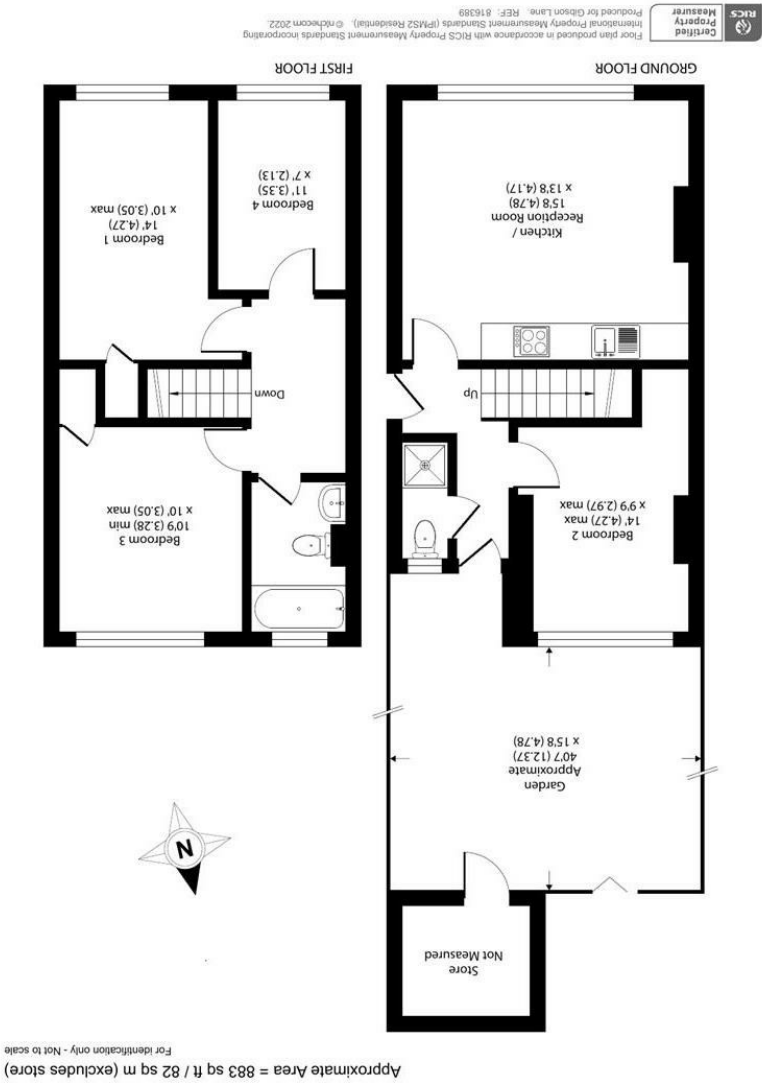
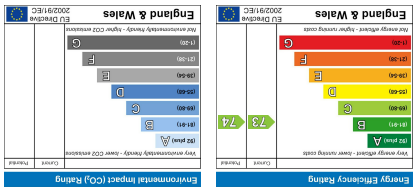


Important Information
All appliances listed in these details are only 'as seen' and have not been tested by Gibson Lane, nor have we sought certification of warranty or service, unless otherwise stated. Measurements, areas and distances are approximate. Floor plans and photographs are for guidance purposes only and must not be relied upon for any purpose. These details are offered on the understanding that all negotiations are made through this company. Neither these particulars, nor verbal representations, form part of any offer or contract, and their accuracy cannot be guaranteed.





- Split Level Maisonette
- 3 Double Bedrooms
- 1 Single Bedroom
- Open-Plan Kitchen
- 2 Bathrooms
- Private Front Garden
- Fully Furnished
- 24 Hour Property Management
- EPC Rating - C
- Council Tax Band - C



£2,500 Per Calendar Month

Ibsley Gardens,
Roehampton,
London,
SW15 4LU



Description:

AVAILABLE 17th SEPTEMBER 2025

Gibson Lane present to the market an immaculate ground floor split level four bedroom apartment located within minutes of Roehampton University. The property provides three double bedrooms, one single room, an open plan kitchen/lounge, two bathrooms and a private garden at the front of the property. This property is directly outside Whiteland's Campus and within walking distance of all other Roehampton University Campuses.

- 3 Double Bedrooms
- 1 Single Bedroom
- Open Plan Kitchen
- 2 Bathrooms
- Private Front Garden
- Fully Furnished
- 24 Hour Property Management Service

Location:

Ibsley Gardens is located close to the beautiful open spaces of Richmond Park, and close to amenities in Roehampton with a further selection of shops, bars and restaurants close by in Putney. This location always offers easy access to the A3.



Furnishing: Furnished
Local Authority: Wandsworth
Council Tax Band: C
Available Date: 17th September 2025
Deposit: £2,884
Tenancy Term: Long Term