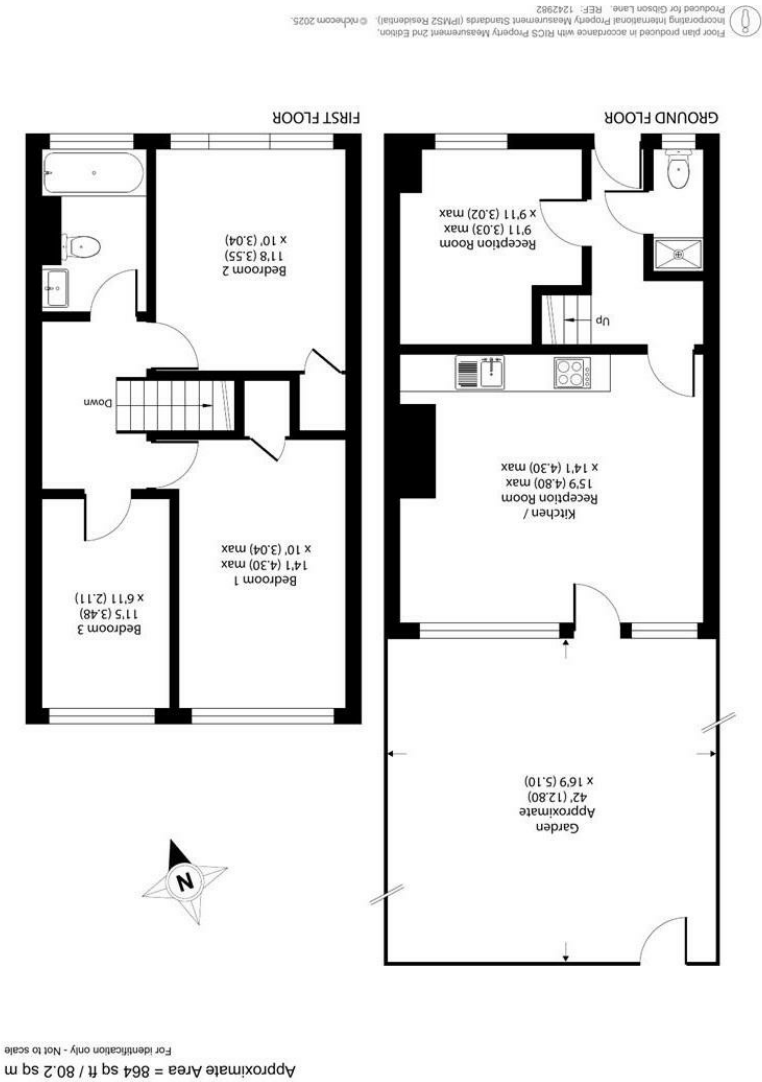
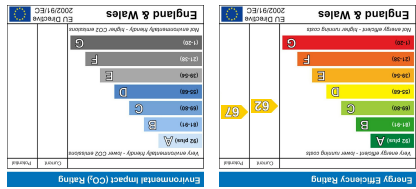


**Important Information**  
All appliances listed in these details are only 'as seen' and have not been tested by Gibson Lane, nor have we sought certification of warranty or service, unless otherwise stated. Measurements, areas and distances are approximate. Floor plans and photographs are for guidance purposes only and must not be relied upon for any purpose. These details are offered on the understanding that all negotiations are made through this company. Neither these particulars, nor verbal representations, form part of any offer or contract, and their accuracy cannot be guaranteed.



34 Richmond Road  
Kingston upon Thames  
Surrey  
KT2 5ED  
www.gibsonlane.co.uk  
Tel: 020 8546 5444



Bordon Walk,  
Roehampton, London, SW15 4JG





- 4 Bedroom Ground Floor Maisonette
- 2 Double Bedrooms
- 2 Single Bedrooms
- Spacious Kitchen/Living Space
- Fully Fitted Kitchen
- Private Rear Garden
- Ground Floor Shower Room
- Excellent Location
- EPC Rating - D
- Council Tax Band - C



£2,425 Per Calendar Month

Bordon Walk,  
Roehampton,  
London,  
SW15 4JG



## Description:

\*AVAILABLE 7th JULY 2025\*

Gibson Lane present to the market a four bedroom ground floor maisonette providing open-plan living space with the benefit of a south facing rear garden. This property offers a spacious open plan kitchen/living room with patio door opening onto the private rear garden, two double bedrooms, two single bedrooms, ground floor shower room and a first floor bathroom with bath & shower. Further benefits include private rear garden, all amenities just a short walk away and an ideal location for students who attend Whitelands, Froebel, Roehampton Vale and Kingston Hill Campuses.

## Location:

Bordon Walk is located just a short walk from the ever popular Richmond Park. The location is well served with many different transport links which include buses to Putney, Hammersmith and Kingston, the A3 is in very close by which provides quick access in and out of London. Close to various Universities and Queen Mary's Hospital.



**Furnishing:** Furnished  
**Local Authority:** Wandsworth  
**Council Tax Band:** C  
**Available Date:** 7th July 2025  
**Deposit:** £2,798  
**Tenancy Term:** Long Term