

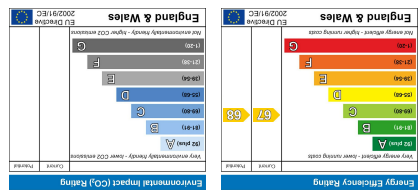
PROTECTED

PROTECTED

The Property Ombudsman

Important Information

All appliances listed in these details are only 'as seen' and have not been tested by Gibson Lane, nor have we sought certification of warranty or service, unless otherwise stated. Measurements, areas and distances are approximate. Floor plans and photographs are for guidance purposes only and must not be relied upon for any purpose. These details are offered on the understanding that all negotiations are made through this company. Neither these particulars, nor verbal representations, form part of any offer or contract, and their accuracy cannot be guaranteed.





- Available 25th August 2025!
- Split Level Flat
- First Floor
- 2 Double Bedrooms
- 2 Single Bedrooms
- Open-Plan Kitchen/Living Room
- Tiled Bathroom With Bath & Shower
- Ideal For Students @ Roehampton University
- EPC Rating - D
- Council Tax Band - C



£2,450 Per Calendar Month

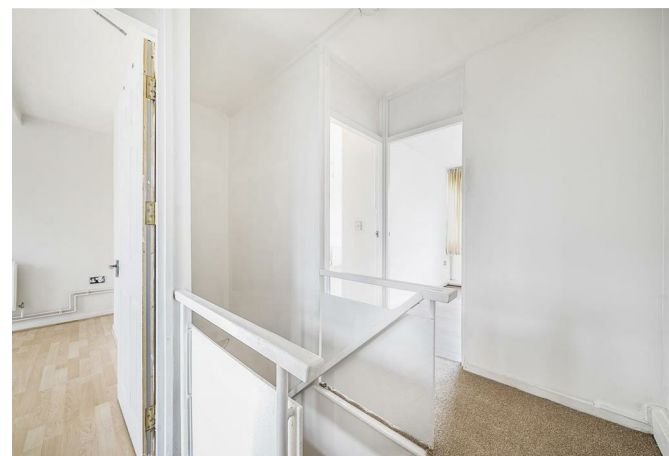
Sherfield Gardens,
Roehampton,
London,
SW15 4PP



Description:

AVAILABLE 25th AUGUST 2025

Gibson Lane present to the market a four bedroom first floor maisonette providing open-plan living space. This property offers a spacious open plan kitchen/living room, two double bedrooms, two single bedrooms, ground floor shower room and a first floor bathroom with bath & shower. All amenities just a short walk away and an ideal location for students who attend Whitelands, Froebel, Roehampton Vale and Kingston Hill Campuses.



Location:

Sherfield Gardens is located just a short walk from the ever popular Richmond Park. The location is well served with many different transport links which include buses to Putney, Hammersmith and Kingston, the A3 is in very close by which provides quick access in and out of London. Close to various Universities and Queen Mary's Hospital.



Furnishing: Furnished
Local Authority: Wandsworth
Council Tax Band: D
Available Date: 25th August 2025
Deposit: £2,826
Tenancy Term: Long Term