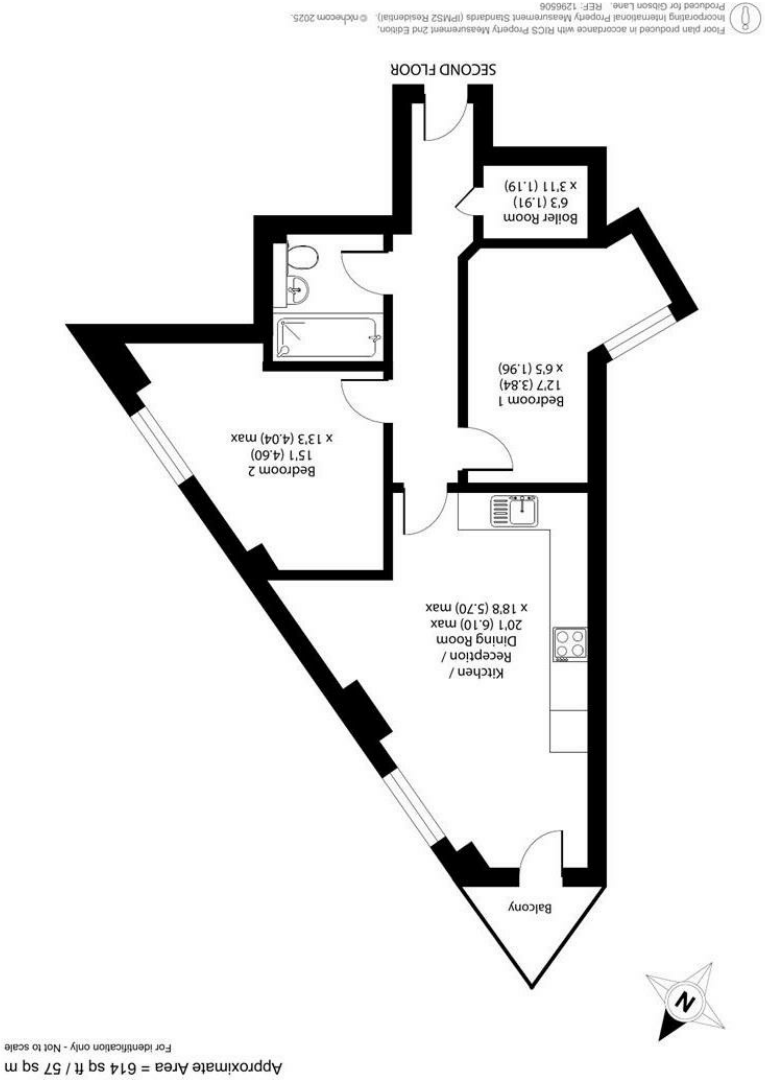
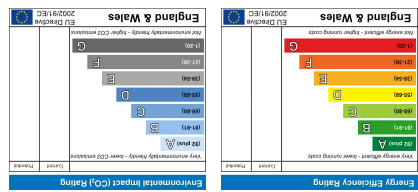


Important Information
All appliances listed in these details are only 'as seen' and have not been tested by Gibson Lane, nor have we sought certification of warranty or service, unless otherwise stated. Measurements, areas and distances are approximate. Floor plans and photographs are for guidance purposes only and must not be relied upon for any purpose. These details are offered on the understanding that all negotiations are made through this company. Neither these particulars, nor verbal representations, form part of any offer or contract, and their accuracy cannot be guaranteed.



34 Richmond Road
Kingston upon Thames
Surrey
KT2 6ED
www.gibsonlane.co.uk
Tel: 020 8546 5444

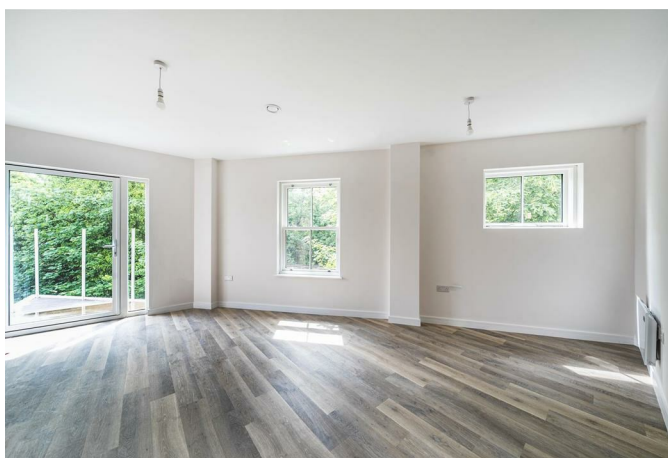


192-194 London Road,
Kingston Upon Thames, Surrey, KT2 6QP



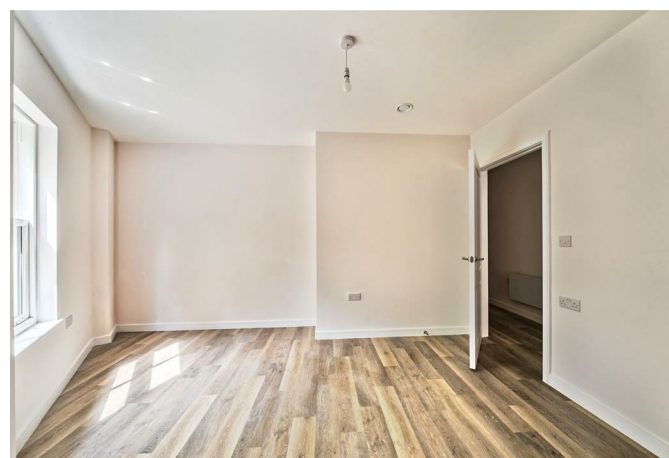


- Stunning New Build Development
- Large Open-Plan Kitchen & Reception Room
- 2 Double Bedrooms
- Tiled Bathroom With Bath & Shower
- Private Balcony
- Utility Cupboard
- Communal Roof Terrace With Picturesque Views Over North Kingston
- Communal Bike Storage
- EPC Rating -
- Council Tax Band -



£2,250 Per Calendar Month

192-194 London Road,
Kingston Upon Thames,
Surrey,
KT2 6QP



Description:

Gibson Lane present to the market this delightful two bedroom apartment located on the second floor of this new build modern development. The property provides excellent living space which includes a modern open-plan kitchen/reception room, two double bedrooms, modern tiled bathroom with bath & shower. Extra benefits include a spacious private balcony, fitted utility storage cupboard in the hallway, communal roof terrace with picturesque views over North Kingston & communal bike storage. Being a new build development this block provides modern spec and has been completed to a high standard throughout.

Location:

Sunny Court is a lovely new build development which is located on London Road, a convenient location for access to Kingston & Norbiton train stations giving direct access into London Waterloo. Within a 10 minute walk Richmond Park is the largest of the Royal Parks which provides 2,500 acres of lovely open air green space. Kingston town centre is just a short walk away and benefits from an array of shops, restaurants and bars. The standard of schooling in the immediate area is excellent within both the private and state sector.

Furnishing: Unfurnished

Local Authority:

Council Tax Band:

Available Date:

Deposit: £2,596

Tenancy Term: Long Term

