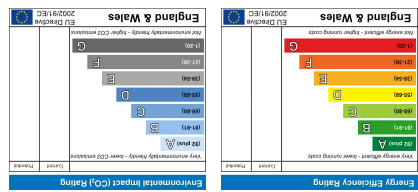


Important Information
All appliances listed in these details are only 'as seen' and have not been tested by Gibson Lane, nor have we sought certification of warranty or service, unless otherwise stated. Measurements, areas and distances are approximate. Floor plans and photographs are for guidance purposes only and must not be relied upon for any purpose. These details are offered on the understanding that all negotiations are made through this company. Neither these particulars, nor verbal representations, form part of any offer or contract, and their accuracy cannot be guaranteed.



Floor plan produced in accordance with RICS Property Measurement Standards (RICS Residential), © nbscom 2025.
Produced for Gibson Lane, REF: 1296001



Approximate Area = 522 sq ft / 48.5 sq m
For identification only - Not to scale

34 Richmond Road
Kingston upon Thames
Surrey
KT2 6ED
www.gibsonlane.co.uk
Tel: 020 8546 5444

gibson lane

192-194 London Road,
Kingston Upon Thames, Surrey, KT2 6QP



- Stunning New Build Development
- Spacious 1 Bedroom Apartment
- Modern Kitchen With Integrated Appliances
- Separate Reception Area
- Tiled Bathroom With Bath & Shower
- Private Patio
- Communal Roof Terrace With Picturesque Views Over North Kingston
- Communal Bike Storage
- EPC Rating -
- Council Tax Band -



£2,000 Per Calendar Month

192-194 London Road,
Kingston Upon Thames,
Surrey,
KT2 6QP

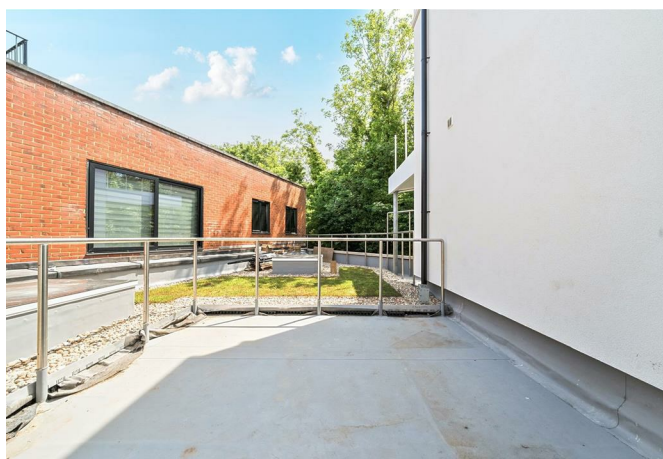
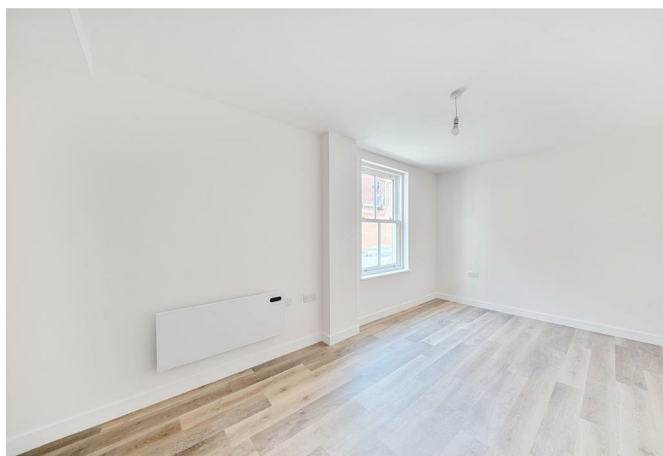


Description:

Gibson Lane proudly present to the market a stunning one bedroom apartment located on the first floor of this new build modern development. The property provides great living space throughout to include a modern open-plan kitchen with separate reception area, good size double bedroom and a modern tiled bathroom with bath & shower. Extra benefits include a spacious private patio, fitted storage cupboard in the hallway with utility space, communal roof terrace with picturesque views over North Kingston & communal bike storage. Being a new build development this block provides modern spec and has been completed to a high standard throughout.

Location:

Sunny Court is a lovely new build development which is located on London Road, a convenient location for access to Kingston & Norbiton train stations giving direct access into London Waterloo. Within a 10 minute walk Richmond Park is the largest of the Royal Parks which provides 2,500 acres of lovely open air green space. Kingston town centre is just a short walk away and benefits from an array of shops, restaurants and bars. The standard of schooling in the immediate area is excellent within both the private and state sector.



Furnishing: Unfurnished

Local Authority:

Council Tax Band:

Available Date:

Deposit: £2,307

Tenancy Term: Long Term