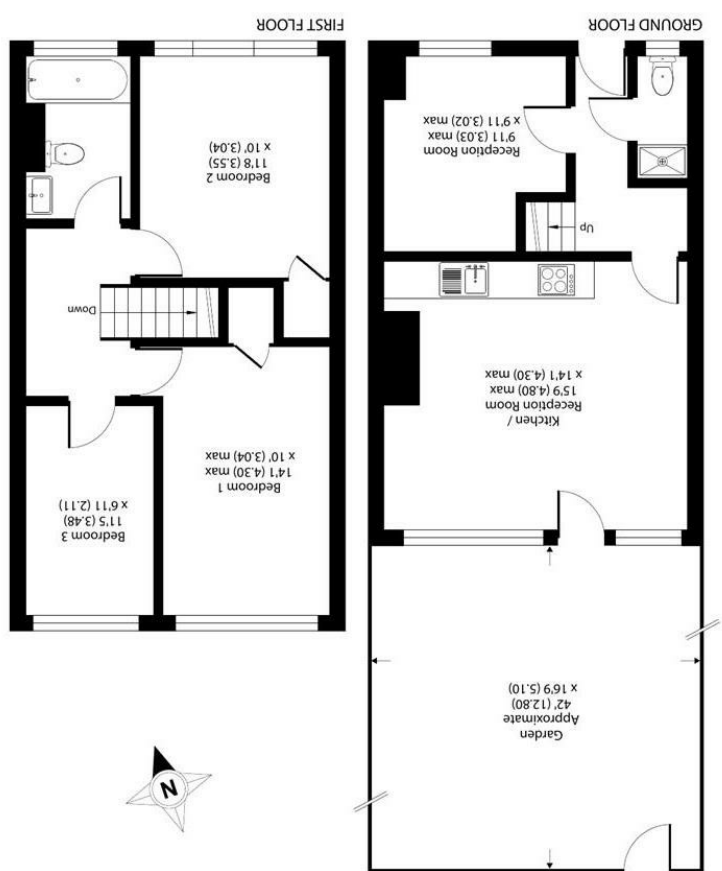


* Not part produced in accordance with ISO 9001:2015
Produced for Gibson Lane REF: 1242982
Incorporating International Property Measurement Standards (IPMS2 Residential). © nichecom 2025.



Approximate Area = 864 sq ft / 80.2 sq m
For identification only - Not to scale

34 Richmond Road
Kingston upon Thames
Surrey
KT2 5ED
www.gibsonlane.co.uk
Tel: 020 8546 5444

gibson lane



Bordon Walk,
Roehampton, London, SW15 4JG



- 4 Bedroom Ground Floor Maisonette
- 2 Double Bedrooms
- 2 Single Bedrooms
- Spacious Kitchen/Living Space
- Fully Fitted Kitchen
- Private Rear Garden
- Ground Floor Shower Room
- Excellent Location
- EPC Rating - D
- Council Tax Band - C



£2,500 Per Calendar Month

Bordon Walk,
Roehampton,
London,
SW15 4JG



Description:

AVAILABLE 7th JULY 2025

Gibson Lane present to the market a four bedroom ground floor maisonette providing open-plan living space with the benefit of a south facing rear garden. This property offers a spacious open plan kitchen/living room with patio door opening onto the private rear garden, two double bedrooms, two single bedrooms, ground floor shower room and a first floor bathroom with bath & shower. Further benefits include private rear garden, all amenities just a short walk away and an ideal location for students who attend Whitelands, Froebel, Roehampton Vale and Kingston Hill Campuses.



Location:

Bordon Walk is located just a short walk from the ever popular Richmond Park. The location is well served with many different transport links which include buses to Putney, Hammersmith and Kingston, the A3 is in very close by which provides quick access in and out of London. Close to various Universities and Queen Mary's Hospital.



Furnishing: Furnished
Local Authority: Wandsworth
Council Tax Band: C
Available Date: 7th July 2025
Deposit: £2,884
Tenancy Term: Long Term