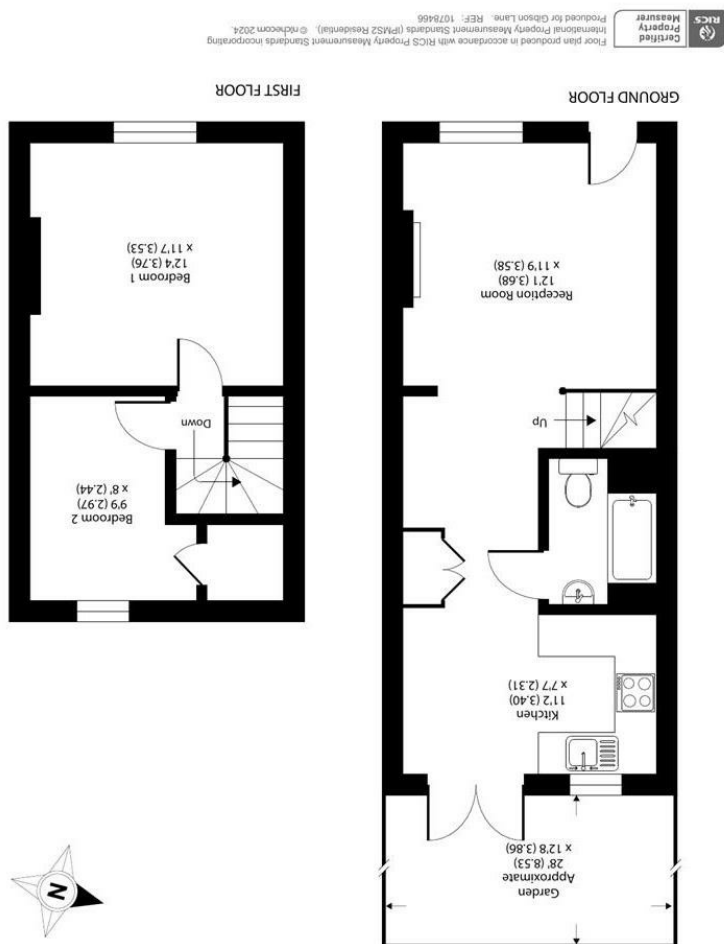




34 Richmond Road  
Kingston upon Thames  
Surrey  
KT12 5ED  
www.gibsonlane.co.uk  
Tel: 020 8546 5444

Approximate Area = 633 sq ft / 58.8 sq m  
For identification only - Not to scale





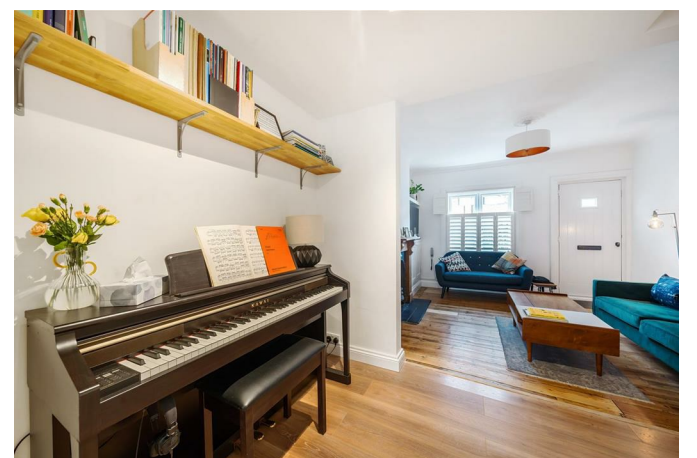


- Charming Victorian Cottage
- Immaculately Presented
- Impressive 28ft Rear Garden
- Part-Furnished
- Open Plan Style of Living
- North Kingston Location
- Moments from Richmond Park
- Close to Norbiton/Kingston Train Stations
- EPC Rating - C
- Council Tax Rating - D



£2,400 Per Calendar Month

York Road,  
Kingston Upon Thames,  
Surrey,  
KT2 6JF



## Description:

Gibson Lane are proud to present to market an immaculately presented two bedroom cottage situated in this popular road in North Kingston. The ground floor provides an impressive open plan style of living to include a spacious double reception room to the front with feature fireplace, downstairs modern bathroom and a kitchen/dining area to the rear with double glass doors opening up onto a fantastic private rear garden spanning almost 30ft. The property also benefits from being a short distance from Richmond Park, Kingston town centre for its shopping, cafe's, restaurants, riverside and transport links as well as Norbiton train station making it convenient for commuting by train to London. Viewings are highly recommended to truly appreciate what this charming home has to offer!

\*Please note that the furnishings are different from that in the photo\*



**Furnishing:** Part furnished

**Local Authority:** Kingston Upon Thames

**Council Tax Band:** D

**Available Date:** 7th June 2025

**Deposit:** £2,769

**Tenancy Term:** Long Term