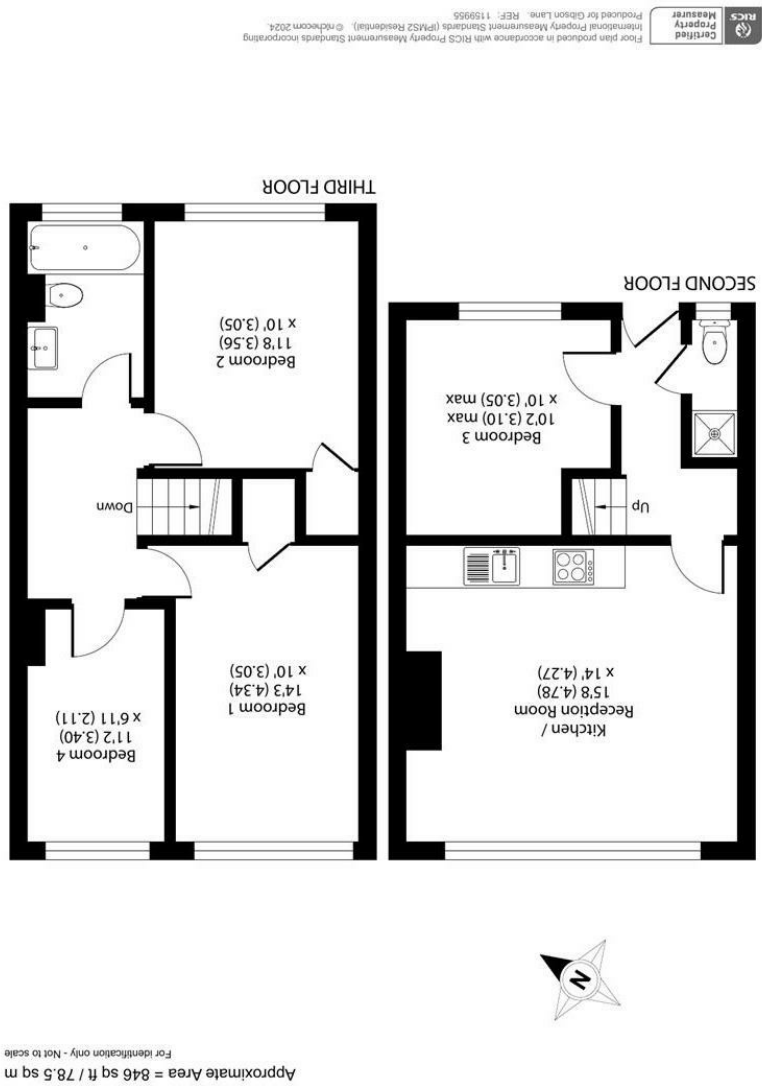


gibson lane

34 Richmond Road
Kingston upon Thames
Surrey
KT2 5ED
www.gibsonlane.co.uk
Tel: 020 8546 5444





- AVAILABLE 28th JULY 2025
- Split Level Flat
- First Floor
- 2 Double Bedrooms
- 2 Single Bedrooms
- Open-Plan Kitchen/Living Room
- Tiled Bathroom With Bath & Shower
- Ideal For Students @ Roehampton University
- EPC Rating - C
- Council Tax Band - C



£2,400 Per Calendar Month

Sherfield Gardens,
Roehampton,
London,
SW15 4PR



Description:

AVAILABLE 28th JULY 2025

This spacious and modern 4 bedroom property presents the perfect living environment for students. It comes fully furnished with desks throughout and is within walking distance of local amenities and Whitelands College. The property further benefits from being close to local bus routes into Central London.

- 2 Double Bedrooms
- 2 Single Bedrooms
- Open Plan Kitchen
- 2 Bathrooms
- 2 Showers
- 1 Bath
- 2 Toilets
- Fully Furnished
- Professionally Managed
- EPC Rating - C
- Council Tax Band - C



Location:

Sherfield Gardens is located just a short walk from the ever popular Richmond Park. The location is well served with many different transport links which include buses to Putney, Hammersmith and Kingston, the A3 is in very close by which provides quick access in and out of London. Close to various Universities and Queen Mary's Hospital.

Furnishing: Furnished
Local Authority: Wandsworth
Council Tax Band: C
Available Date: 28th July 2025
Deposit: £2,769
Tenancy Term: Long Term