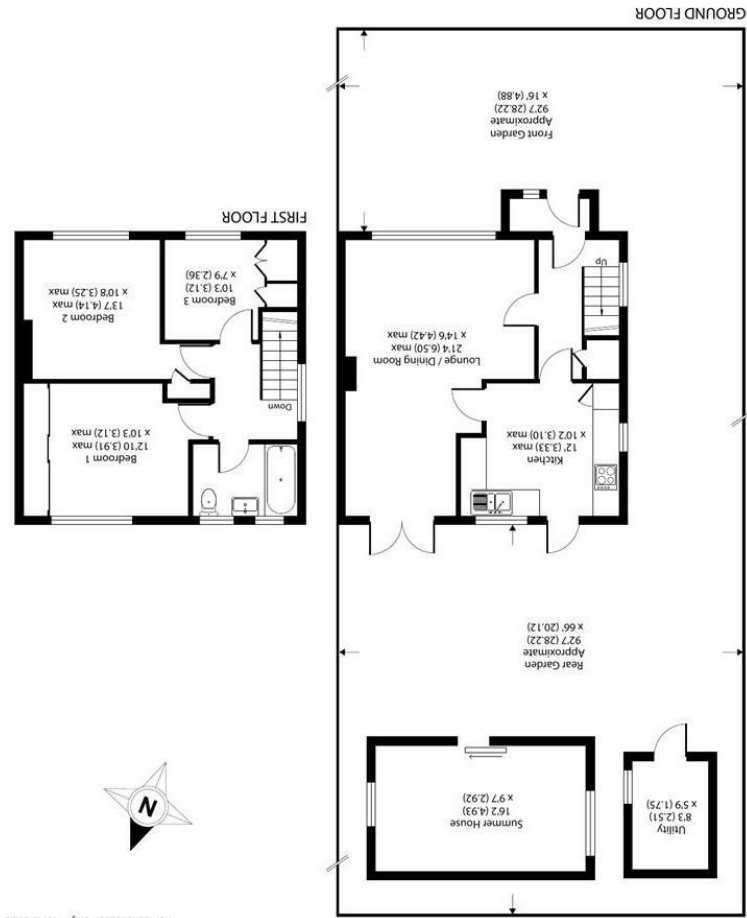


Environment Impact (CO ₂) Rating	Energy Efficiency Rating

Floor plan produced in accordance with RICS Property Measurement Standards (RICS Residential), © December 2024. Produced for Gibson Lane, REF: 1192555



Approximate Area = 909 sq ft / 84.4 sq m
 Outbuildings = 205 sq ft / 19 sq m
 Total = 1114 sq ft / 103.4 sq m
 For identification only - Not to scale

34 Richmond Road
 Kingston upon Thames
 Surrey
 KT2 5ED
 www.gibsonlane.co.uk
 Tel: 020 8546 5444



Buckingham Road,
 Richmond, Greater London, TW10 7EQ



- Stunning End of Terrace 3 Bedroom Family Home
- Beautiful Modern Kitchen
- 2 Double Bedrooms - 1 Single Bedroom
- Spacious Open Living Room
- Separate Utility Room
- Large Outbuilding With Heating
- Short Walk From The River Thames, Ham Lands and Ham House
- Professionally Managed
- EPC Rating - C
- Council Tax Band - E



£3,250 Per Calendar Month

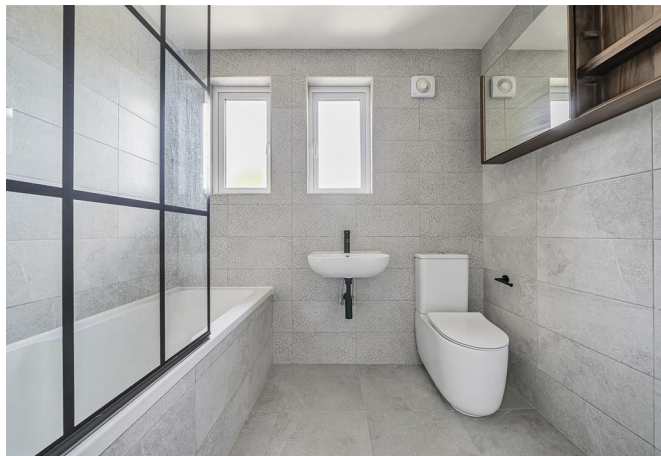
Buckingham Road,
Richmond,
Greater London,
TW10 7EQ



Description:

Gibson Lane are pleased to present to market this lovely family home in Buckingham Road, Ham which has been renovated to a high standard throughout - a charming end terrace house that could be your next dream home! This lovely property boasts a spacious reception room which had been opened up to combine two rooms together, perfect for entertaining guests or simply relaxing with your family. The ground floor also features a well equipped family kitchen, a large garden with separate utility room, an excellent outbuilding with electricity and heating making it an ideal working from home space or children's play room. The first floor consists of a modern bathroom, three well-proportioned bedrooms, two of which include built-in wardrobes, making this an ideal home for a family. This house benefits from being minutes away from the River Thames, Ham Lands and Ham House with its lovely grounds and gardens. This property offers the perfect blend of suburban tranquillity and urban convenience.

Whether you're looking to settle down in a peaceful neighbourhood or seeking a vibrant community to be a part of, Buckingham Road has something for everyone. Don't miss out on the opportunity to make this house your own and contact us today regarding your interest in renting this property.



Location:

Buckingham Road is a sought after road ideally positioned between Richmond and Kingston town centres with their extensive range of retail outlets, restaurants, overland and underground stations providing services to Waterloo and the City. This is a wonderful environment for a family, with both Richmond Park and the River Thames a short distance away, Ham Lands and Ham House are also close by. Schooling within the immediate area is excellent. These include: The Russell School, The German School, Grey Court and Tiffin Girls School. Leisure and sporting facilities include rowing and sailing on the River Thames, golf clubs, tennis clubs and private & public health clubs.

Furnishing: Unfurnished

Local Authority: Richmond Upon Thames

Council Tax Band: E

Available Date:

Deposit: £3,750

Tenancy Term: Long Term

