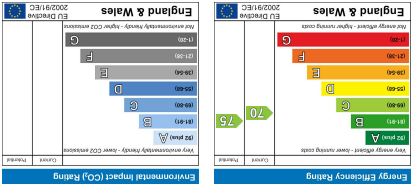
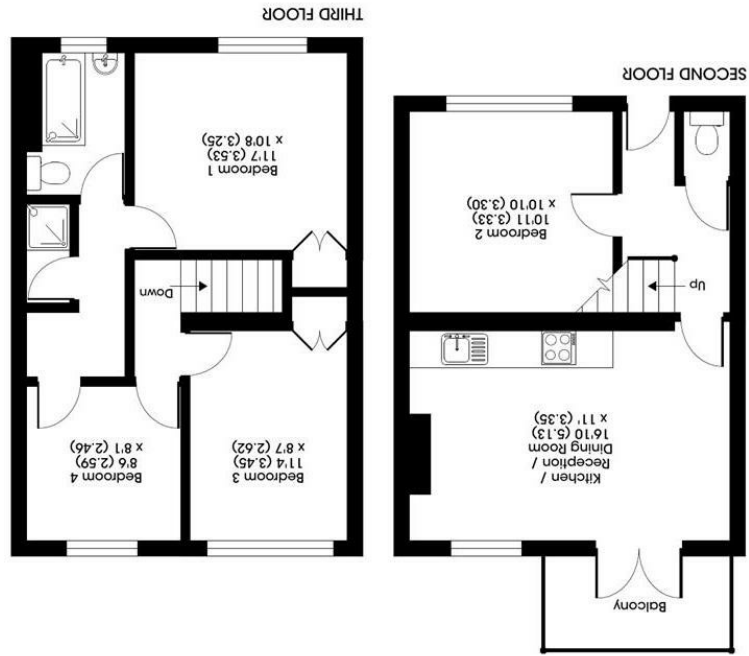


Important Information
 All appliances listed in these details are only 'as seen' and have not been tested by Gibson Lane, nor have we sought certification of warranty or service, unless otherwise stated. Measurements, areas and distances are approximate. Floor plans and photographs are for guidance purposes only and must not be relied upon for any purpose. These details are offered on the understanding that all negotiations are made through this company. Neither these particulars, nor verbal representations, form part of any offer or contract, and their accuracy cannot be guaranteed.



RICS Certified Property Measurement
 Floor plan produced in accordance with RICS Property Measurement Standards incorporating International Property Measurement Standards (IPMS). © Anderson 2023.



Approximate Area = 858 sq ft / 79.7 sq m
 For identification only - Not to scale

34 Richmond Road
 Kingston upon Thames
 Surrey
 KT2 5ED
 www.gibsonlane.co.uk
 Tel: 020 8546 5444



Petersfield Rise,
 Roehampton, London, SW15 4AQ





- Split Level Flat
- Private Balcony
- 3 Double Bedrooms
- 1 Single Bedroom
- Open-Plan Kitchen
- Tiled Bathroom With Bath & Shower
- Great Location
- Ideal For Student @ Roehampton University
- EPC Rating - C
- Council Tax Band - C



£2,400 Per Calendar Month

Petersfield Rise,
Roehampton,
London,
SW15 4AQ



Description:

AVAILABLE 3rd AUGUST 2024

Gibson Lane present to the market this spacious four bedroom first floor split level with access to a private balcony. Internally the property provides spacious living arrangements with an open plan fully fitted kitchen/lounge, three double bedrooms, one single bedroom, ground floor W/C shower room and a tiled upstairs bathroom with bath & shower. The property is conveniently located for Roehampton University students and benefits from being just a short walk from the very popular Richmond Park. Surrounded by lots of green spaces makes this a great property for those who want to be close to local amenities and enjoy the outside surroundings.

- Great Student Sharers Property.
- 4 Bedroom Split Level Maisonette.
- 3 Double Bedrooms.
- 1 Single Bedroom.
- Open-plan kitchen/living area with sofa seating and dining area.
- Generous living space.
- Great access for University.
- Fridge/Freezer, Dishwasher.
- Professional Management Company.
- 24 Hour Property Maintenance.

On the edge of the Alton Estate, this charming four bedroom first floor maisonette is smartly presented throughout. Fully furnished and further benefiting from a balcony. Ideally located for students who attend Whitelands, Froebel, Roehampton Vale and Kingston Hill Campuses.



Location:

Purbrook House is located just a short walk from the ever popular Richmond Park. The location is well served with many different transport links which include buses to Putney, Hammersmith and Kingston, the A3 is in very close by which provides quick access in and out of London. Close to various Universities and Queen Mary's Hospital.

Furnishing: Furnished
Local Authority: Wandsworth
Council Tax Band: C
Available Date: 3rd August 2024
Deposit: £2,769
Tenancy Term: Long Term