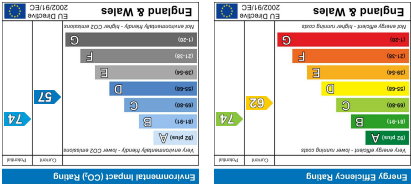
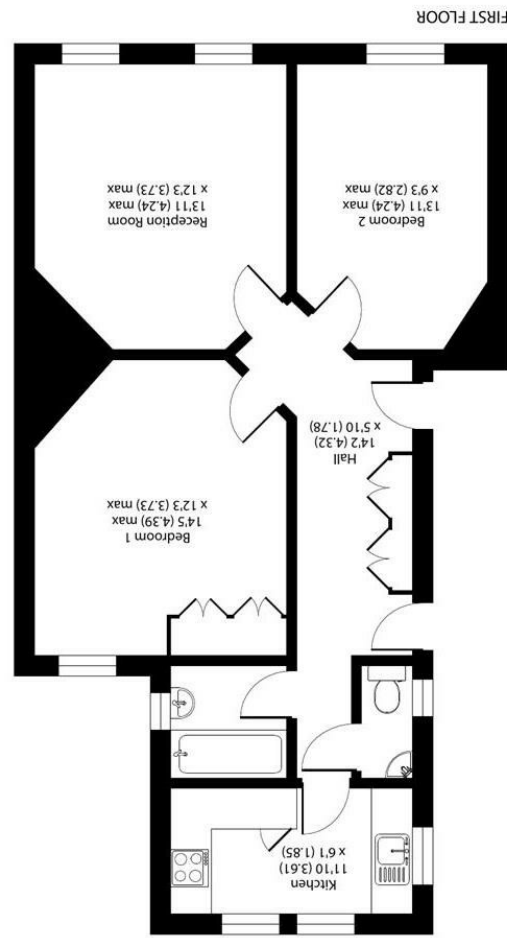


Important Information
 All appliances listed in these details are only 'as seen' and have not been tested by Gibson Lane, nor have we sought certification of warranty or service, unless otherwise stated. Measurements, areas and distances are approximate. Floor plans and photographs are for guidance purposes only and must not be relied upon for any purpose. These details are offered on the understanding that all negotiations are made through this company. Neither these particulars, nor verbal representations, form part of any offer or contract, and their accuracy cannot be guaranteed.



RICS Certified Property Measurement
 Floor plan produced in accordance with RICS Property Measurement Standards incorporating International Property Measurement Standards (IPMS2 Residential). © Robinson 2024. REF: 146086

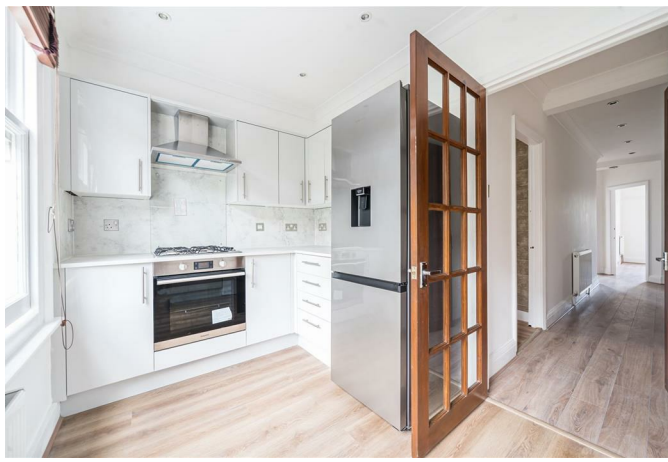


Approximate Area = 737 sq ft / 68.5 sq m
 For identification only - Not to scale

34 Richmond Road
 Kingston upon Thames
 Surrey
 KT12 5ED
 www.gibsonlane.co.uk
 Tel: 020 8546 5444



High Street,
 Kingston Upon Thames, Surrey, KT1 1NA



- River View Apartment
- Fully Refurbished
- 2 Double Bedrooms
- Large Reception Room
- Fully Fitted Kitchen
- Tiled Bathroom With Bath & Shower
- Central Kingston Location
- Presented to a Good Standard Internally
- EPC Rating - D
- Council Tax Band - D



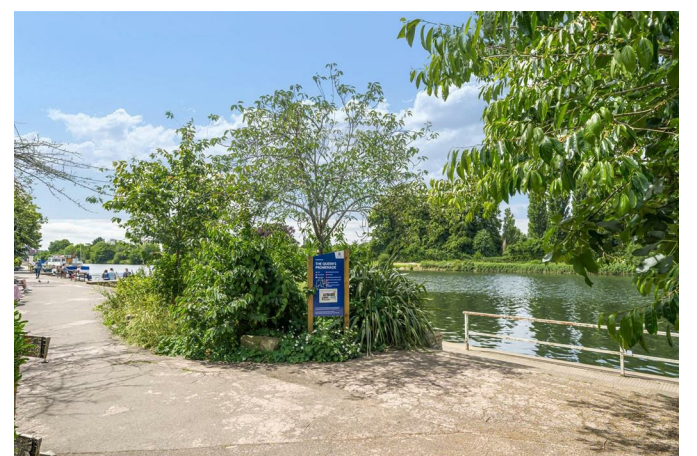
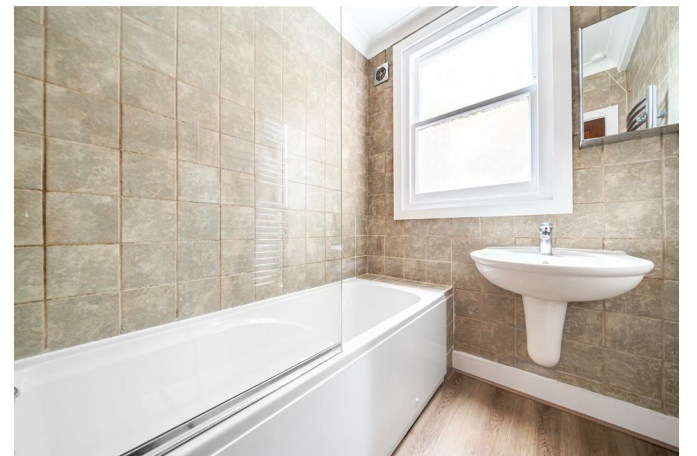
£2,000 Per Calendar Month

High Street,
Kingston Upon Thames,
Surrey,
KT1 1NA



Description:

Gibson Lane present to the market this lovely fully refurbished two double bedroom flat located in Townend House, which provides views overlooking the serene River Thames, providing a tranquil and scenic backdrop to your everyday life. This beautiful flat offers a delightful reception room which provides the view of the river, perfect for entertaining guests or simply relaxing after a long day. The property boasts two spacious double bedrooms, offering ample space for a small family, a couple, or even for those who desire a home office or guest room, modern tiled bathroom with bath & stand-in shower. The central location of Townend House ensures that you are just a stone's throw away from all the amenities Kingston Upon Thames has to offer, including shops, restaurants, and excellent transport links. Don't miss the chance to make this riverside retreat your own and experience the best of what Kingston Upon Thames has to offer.



Location:

Townend House is on the edge of Kingston Town Centre adjacent to the River Thames and just a short walk to the centre of Kingston which offers an array of excellent bars, restaurants & high street shopping. Kingston & Surbiton train stations are in close proximity which offer fast & frequent access into Waterloo. Overlooking the River Thames Townend House is opposite The Queens promenade which provides peasant riverside walks.

Furnishing: Unfurnished

Local Authority: Kingston Upon Thames

Council Tax Band: D

Available Date:

Deposit: £2,307

Tenancy Term: Long Term