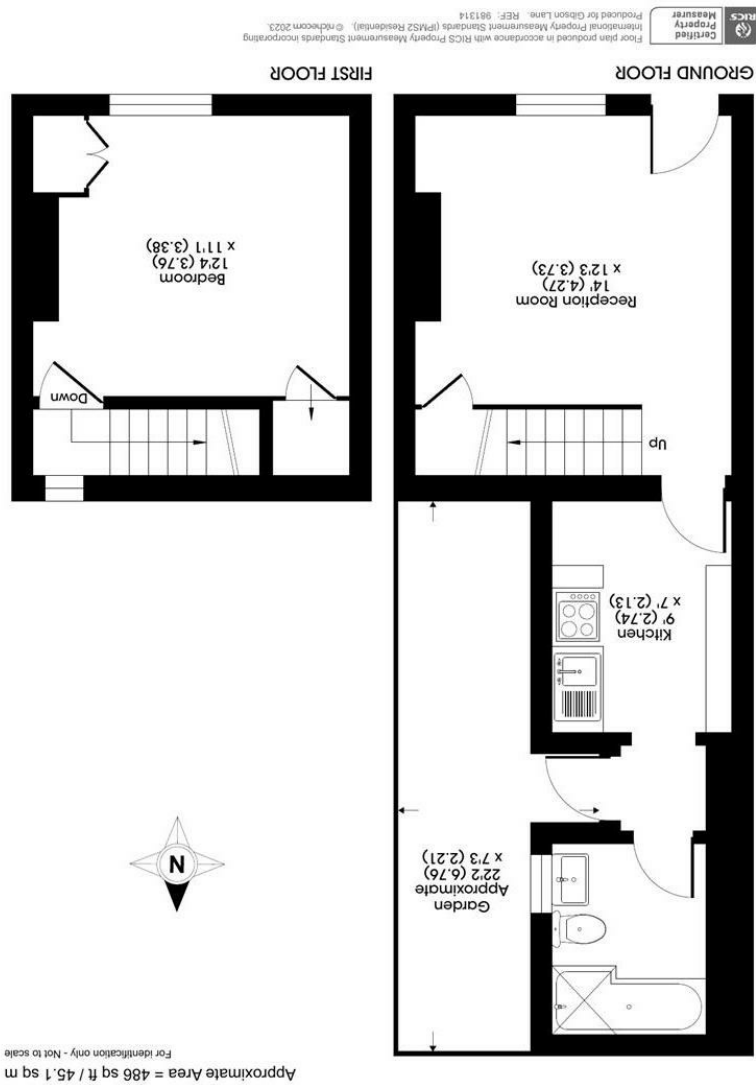
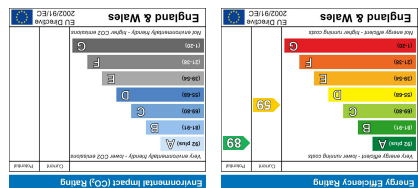


Important Information
All appliances listed in these details are only 'as seen' and have not been tested by Gibson Lane, nor have we sought certification of warranty or service, unless otherwise stated. Measurements, areas and distances are approximate. Floor plans and photographs are for guidance purposes only and must not be relied upon for any purpose. These details are offered on the understanding that all negotiations are made through this company. Neither these particulars, nor verbal representations, form part of any offer or contract, and their accuracy cannot be guaranteed.



34 Richmond Road
Kingston upon Thames
Surrey
KT2 5ED
www.gibsonlane.co.uk
Tel: 020 8546 5444

gibson lane

Hawks Road,
Kingston Upon Thames, Surrey, KT1 3EF





- Cottage
- 1 Double Bedroom
- Separate Reception Room
- Fully Fitted Kitchen
- Private Courtyard Garden
- Well Presented Internally
- Convenient for Town Centre
- EPC Rating - D
- Council Tax Band - C



£1,600 Per Calendar Month

Hawks Road,
Kingston Upon Thames,
Surrey,
KT1 3EF



Description:

Gibson Lane present to the market this delightful one bedroom cottage with private garden close to the centre of Kingston. Internally the property is presented to an excellent standard with features to include an impressive spacious reception room, modern fitted kitchen, double bedroom and bathroom. Viewings are highly recommended to appreciate what this delightful home has to offer.

Location:

Hawks Road is within a few hundred yards of Fairfield Park offering its many acres of open space, The River Thames and Richmond Park are also close by. Kingston town centre offers an array of shops, bars, restaurants and Kingston station offers a frequent service directly into Waterloo. The standard of schooling in the immediate area is excellent within both the private and state sectors.

Furnishing: Unfurnished
Local Authority: Kingston Upon Thames
Council Tax Band: C
Available Date: 18th June 2024
Deposit: £1,846
Tenancy Term: Long Term

