



## University Mansions, SW15

£700,000

2 1 1 D

- Charming Mansion Flat
- Two Bedrooms
- Bright And Spacious
- Modern Fitted Kitchen
- Riverside Views
- Prime Putney Location





## ABOUT THE PROPERTY

Marsh and Parsons are delighted to bring this charming ground-floor mansion flat to the market situated within the sought-after University Mansions, positioned within view of the River Thames.

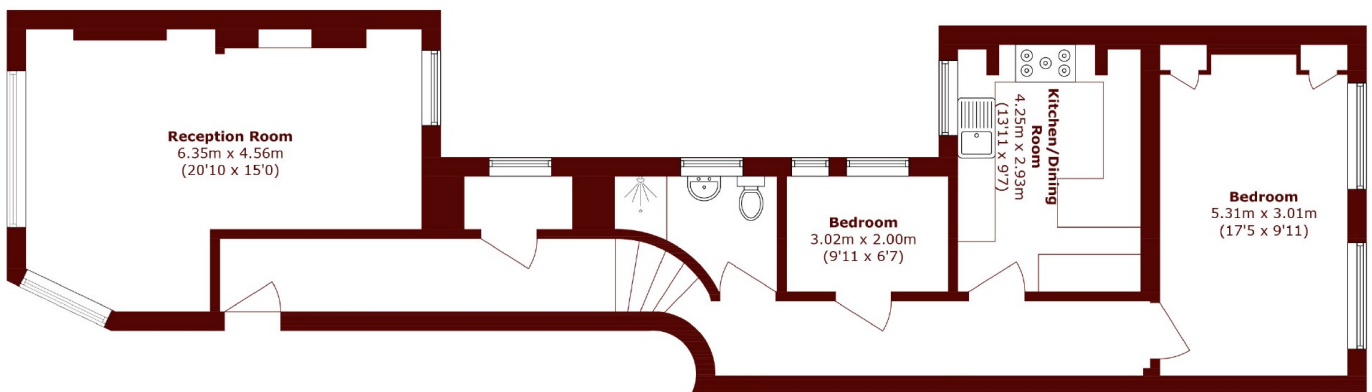
The property features a bright and spacious principal bedroom, a second smaller room ideal as a guest room, nursery or home office, a stylish bathroom, and a contemporary fully fitted kitchen. The generous reception room is bathed in natural light, enhanced by high ceilings, characterful features, and bespoke plantation shutters offering added privacy and a refined finish.



It is perfectly suited to professionals, couples or small families looking for charm, convenience, and a prime Putney address.

Excellent transport via Putney Station (National Rail & District Line) and multiple bus routes offers fast access to central London. Nearby green spaces include Wandsworth and Bishops Park. Putney Leisure Centre provides a gym, pool, and fitness classes. Opposite the famous Oxford and Cambridge rowing clubs, with riverside pubs and restaurants close by. Viewings highly recommended!





## Ground Floor

Total area (approx.): 84.3 sq. m (907.4 sq. ft)

### Marsh & Parsons Barnes

73-75 Church Road, London,  
SW13 9HH  
020 8563 8333