



Riverview Gardens, SW13

£1,150,000



- Two Bedrooms
- Two Bathrooms

- Ground Floor
- Mansion Flat

- South Facing Garden
- Communal Riverside Gardens





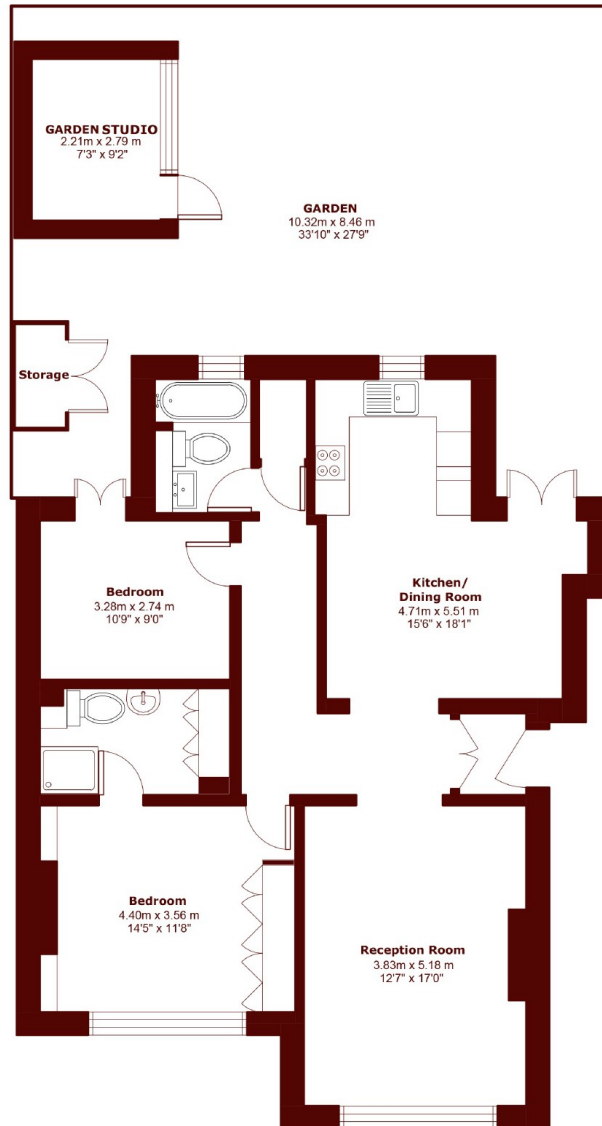
ABOUT THE PROPERTY

Marsh & Parsons is proud as punch to be representing this two bedroom two bathroom ground floor mansion flat with south facing garden on this highly sought after quiet residential tree-lined road. The property has been renovated by the existing owner. The flat comprises a modern kitchen with integrated appliances with an eat-in dining area which . French doors lead out onto a mature garden which benefits from a fully wired home studio with heating.

The flat flows across the hallway into a separate reception room with high ceilings and period features which include feature fireplace. The main bedroom is a great size and benefits from en suite. The second bedroom fits a double and has direct access into the garden. The property benefits from a second bathroom, a storage room off the hallway and access to expansive communal riverside gardens running along the River Thames.

Riverview Gardens is just moments from the River Thames and close to the amenities of Hammersmith Broadway and Barnes. Barnes Common is a short walk away, and Barnes Railway Station offers National Rail services, while Hammersmith Broadway provides access to the Hammersmith & City, District, and Piccadilly lines. Nearby schools include St Paul's, The Harroldian, and the Swedish School.





Total area (approx.): 94.22 sq. m (1,014.0 sq. ft)

Marsh & Parsons Barnes
73-75 Church Road, London,
SW13 9HH
020 8563 8333

We aim to make our particulars both accurate and reliable. However, they are not guaranteed; nor do they form part of an offer or contract. If you require clarification on any points then please contact us, especially if you're traveling some distance to view. Please note that appliances and heating systems have not been tested and therefore no warranties can be given as to their good working order.