



Carmalt Gardens, SW15

£580,000



- Charming Victorian Building
- Two Double Bedrooms

- Great Natural Light
- Generous Living Space

- Quiet Residential Street
- Desirable Putney Location





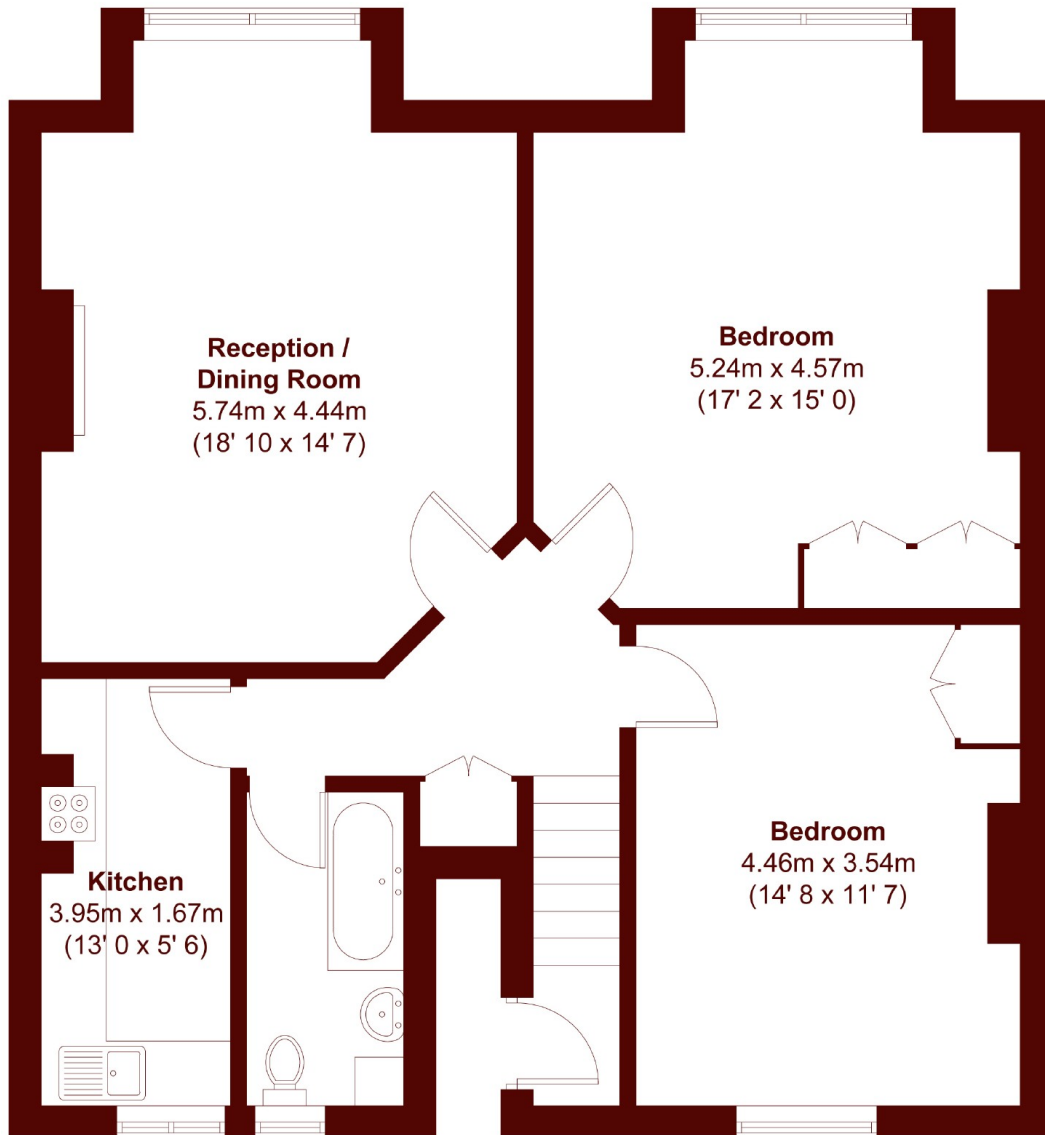
ABOUT THE PROPERTY

A fantastic opportunity to purchase a two double bedroom top floor flat in this charming double fronted end-of-terrace Victorian building on a quiet residential street. The flat boasts well-proportioned bedrooms, offering plenty of space for relaxation and rest. The property provides a great opportunity for those seeking a peaceful yet connected lifestyle in one of Southwest London's most desirable locations.

Purchasers will also benefit from very low annual charges and a 999-year lease on completion. There is the rare opportunity to rent or purchase the large loft space which is available via separate negotiation.

ChatGPT said: Carmalt Gardens is ideally situated just south of Upper Richmond Road, close to Putney's excellent amenities. Both Putney mainline and East Putney underground stations are nearby, along with top-rated schools. Tucked away at the quiet, leafy end of the road, the spacious, light-filled rooms offer green views. The rear overlooks the Putney Lawn Tennis Club courts and is a short walk from the shops, cafes, and restaurants of Putney High Street.





Second Floor

APPROX. GROSS INTERNAL FLOOR AREA
887 SQFT / 82.4 SQM

Marsh & Parsons Barnes
73-75 Church Road, London,
SW13 9HH
020 8563 8333

We aim to make our particulars both accurate and reliable. However, they are not guaranteed; nor do they form part of an offer or contract. If you require clarification on any points then please contact us, especially if you're traveling some distance to view. Please note that appliances and heating systems have not been tested and therefore no warranties can be given as to their good working order.