

Charles Harrod Court, SW13

£850,000



- Two Bedrooms
- Allocated Parking

- Gated Development
- Ground Floor Apartment

- Lovely High Ceilings
- Superb Onsite Facilities



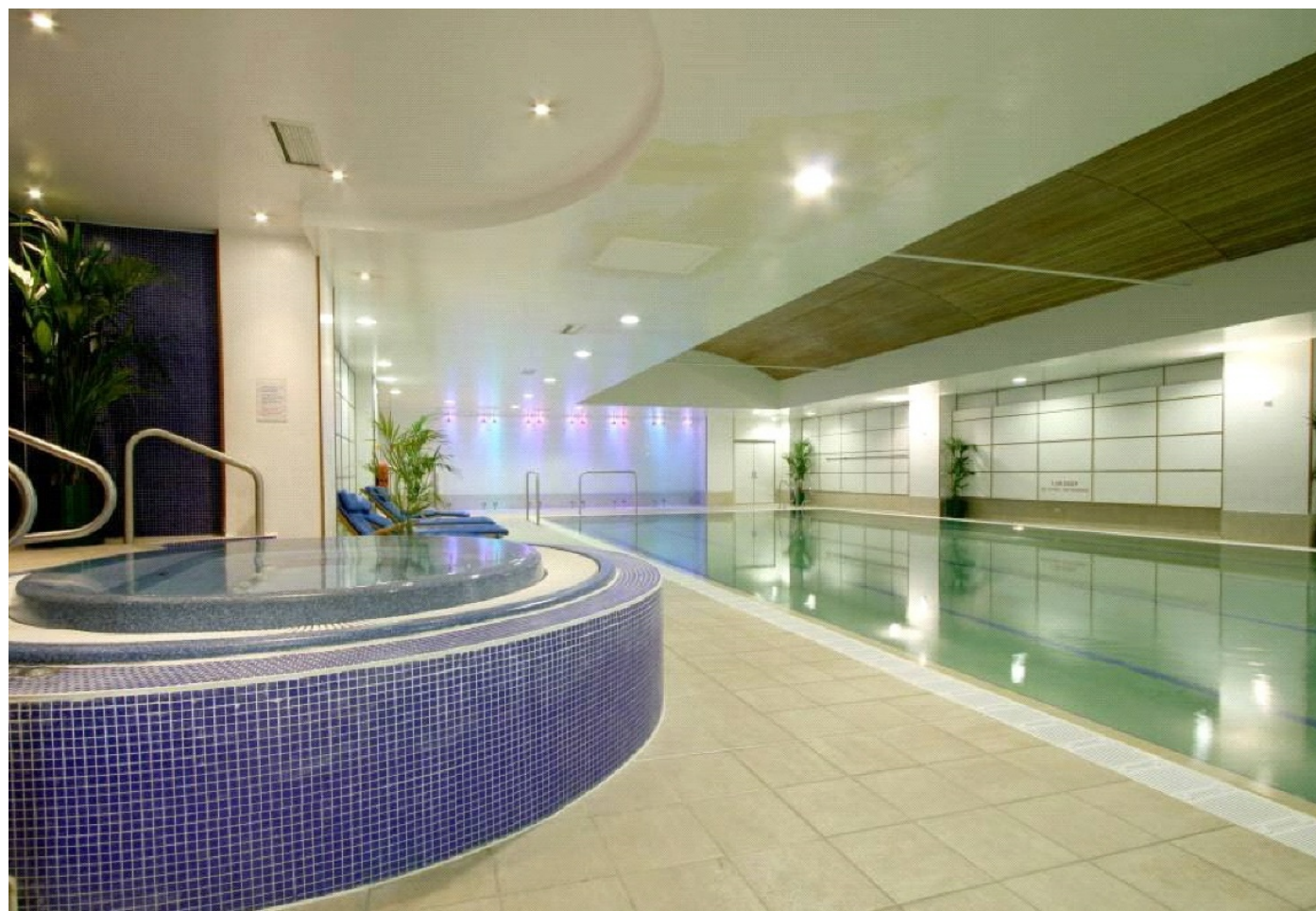


ABOUT THE PROPERTY

OIEO £850,000 - This fantastic two bedroom apartment benefits from high ceilings, large windows, ample living space and is set in the prestigious Harrods Village development.

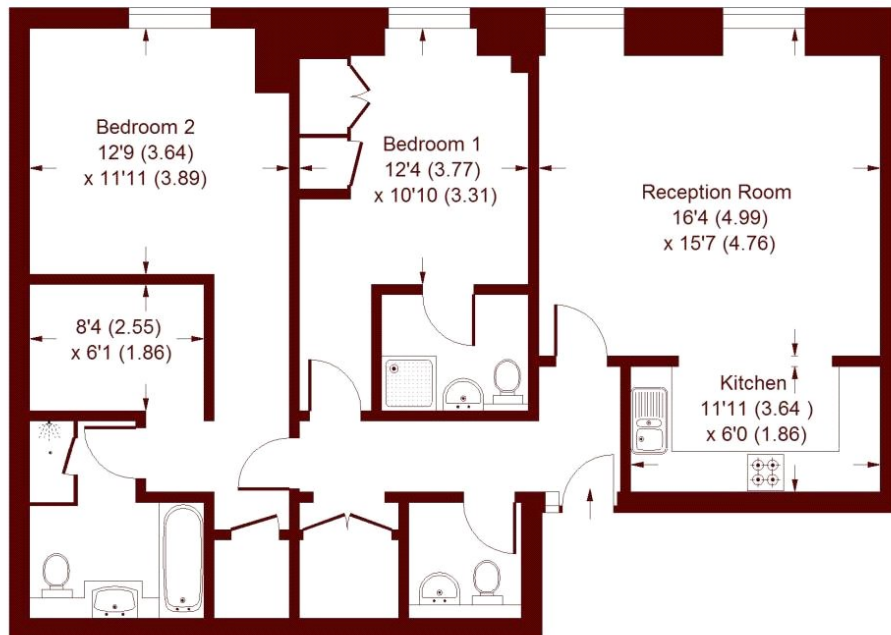
The property boasts a bright and spacious reception room with semi open-plan kitchen. There are two large double bedrooms, both with en suite bathrooms and good storage, as well as a separate WC. The property also benefits from 24 hour concierge, allocated underground parking and full use of the onsite gymnasium and pool.

The development has quick access to the Thames Walk along the river and quick access to the famous Barnes Wetland Centre . The property is located close to Hammersmith Broadway north of the river which hosts a cinema theatres and gyms alongside shops and restaurants including Sam's Riverside, River Café, and The Gate. Transport links include Hammersmith Underground (whereby there are four underground tube lines which include Piccadilly, Hammersmith & City, District and Circle Line services). You can use Barnes mainline stations which offer fast trains to Waterloo and Heathrow among other destinations within Central London. Nearby, there are several highly sought after schools including St Paul's Boys and Girls, the Harrodian School and the Swedish School.



Charles Harrods Court, SW13

APPROX. GROSS INTERNAL FLOOR AREA
1055 SQFT / 98 SQM



Whilst every attempt has been made to ensure the accuracy of the floor plan, measurements are approximate and not to scale.
No guarantee is given on the total square footage of the property quoted on the plan. Figures given are for guidance.
Plan is for illustration purposes only.

Marsh & Parsons Barnes

73-75 Church Road, London,
SW13 9HH
020 8563 8333