



Upper Richmond Road, SW15

£950,000



- Three/Four Bedrooms
- Off Street Parking

- Freehold
- Newly Renovated

- Back onto Barnes Common
- 3 Min Walk To Barnes Station



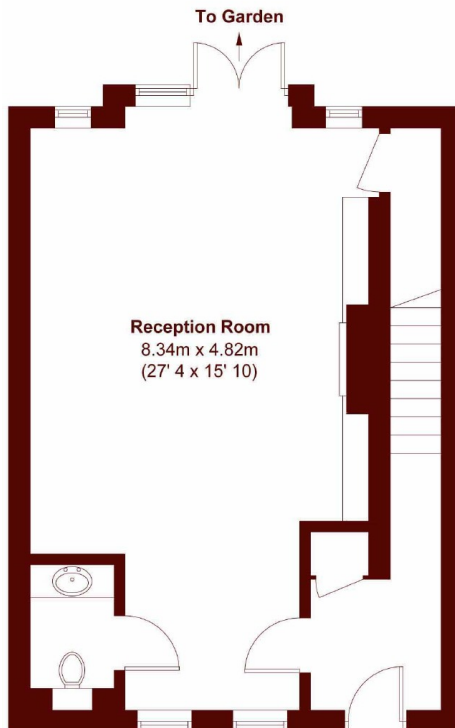
ABOUT THE PROPERTY

This immaculately refurbished townhouse is perfectly positioned with direct access to Barnes Common, offering a rare combination of modern living and natural surroundings. The current owners have carried out a full back-to-brick renovation, resulting in a home that is presented in outstanding condition throughout.

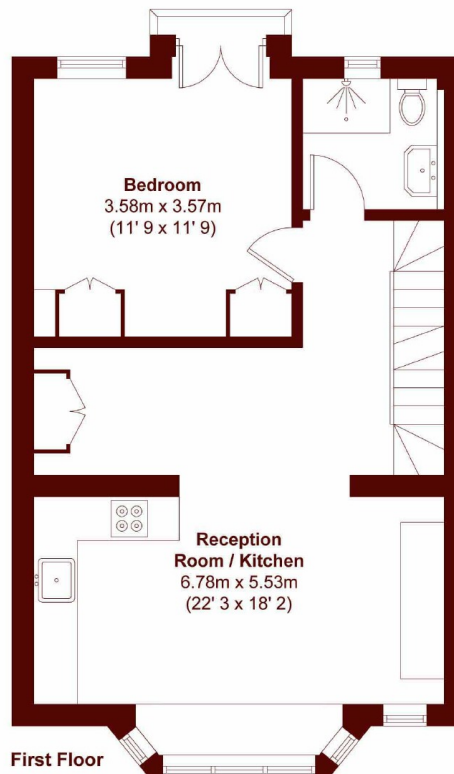
On the first floor, there is a generous double bedroom alongside a well-appointed family bathroom. This floor also features an open-plan kitchen and living area, with a large bay window that fills the space with natural light. The top floor is dedicated to two large double bedrooms, each with its own en-suite bathroom.

The property offers excellent transport links via Barnes Station and local buses to Hammersmith, Putney, and Richmond. Top schools like Barnes and East Sheen Primary are within 0.7 miles, and nearby parklands include Barnes Common, Palewell Common, and Richmond Park.

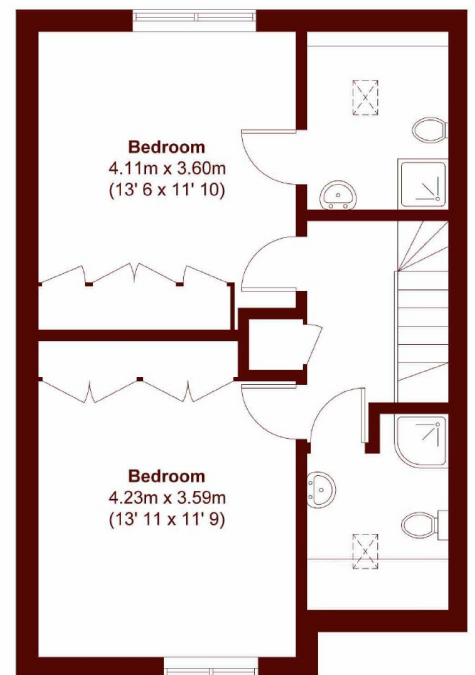




Ground Floor



First Floor



Second Floor

APPROX. GROSS INTERNAL FLOOR AREA 1555 SQFT / 144.5 SQM
BALCONY AREA 4 SQFT / 0.4 SQM

Marsh & Parsons Barnes
73-75 Church Road, London,
SW13 9HH
020 8563 8333

We aim to make our particulars both accurate and reliable. However, they are not guaranteed; nor do they form part of an offer or contract. If you require clarification on any points then please contact us, especially if you're traveling some distance to view. Please note that appliances and heating systems have not been tested and therefore no warranties can be given as to their good working order.