



## Riverview Gardens, SW13

£1,100,000



- Mansion Flat
- Communal Gardens

- Stones Throw From The Riverside

- Ground Floor
- Two Bedrooms









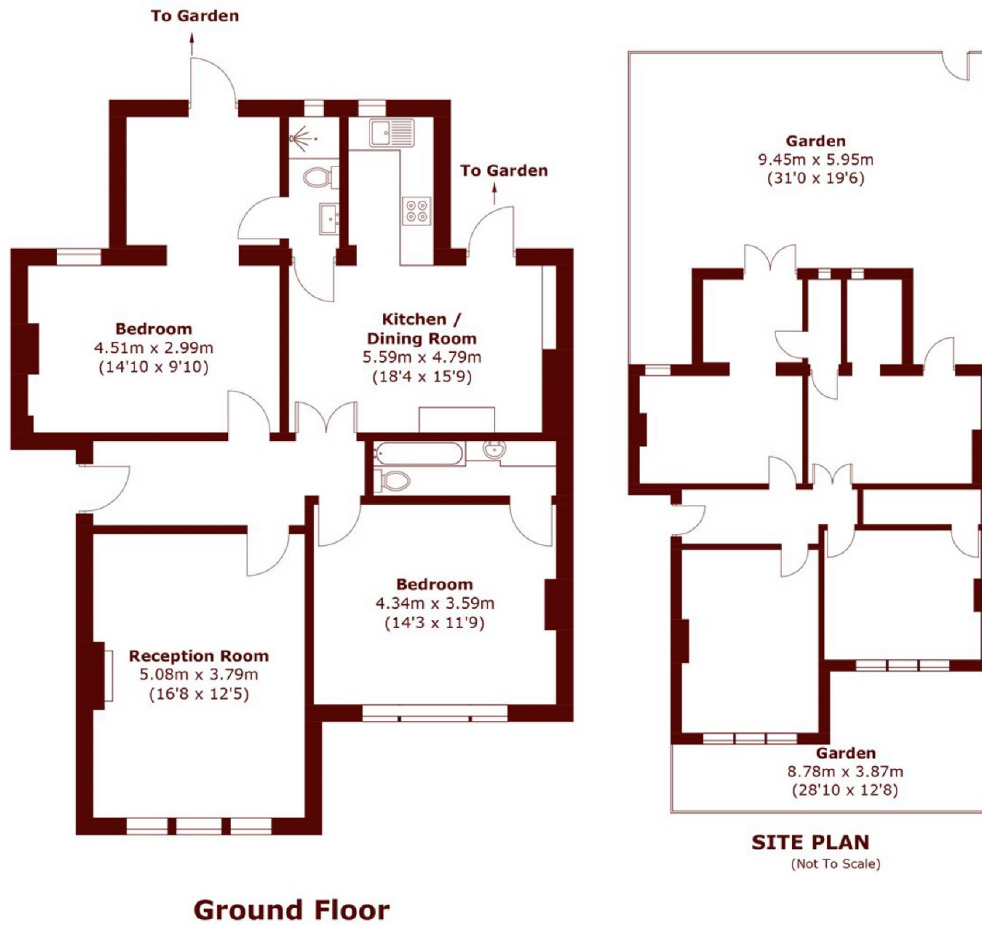
## ABOUT THE PROPERTY

Situated in a popular riverside mansion block, this attractive ground floor flat offers wonderful high ceilings, spacious accommodation and plenty of natural light. Entering the flat, the layout has been adapted to create an open-plan living area leading through to a kitchen/dining room. The reception room with large windows and wooden floors throughout benefits from a feature fireplace. The fully fitted kitchen has been designed to enable space for a large dining room table and has plenty of extra storage throughout. Direct access to the garden is also provided from the kitchen/dining room. There are two generous double bedrooms with built-in wardrobes and a family bathroom. The property further benefits from access to the extensive riverside communal gardens.



Riverview Gardens is conveniently located to the River Thames and benefits from its close proximity to the amenities of Hammersmith Broadway and Barnes, while Barnes Common is a short walk away. Barnes Railway station provides convenient access to National Rail services, while the nearby Hammersmith Broadway offers London Underground links on the Hammersmith & City, District and Piccadilly lines. Excellent schools are also not far with St Pauls, The Harrodian and Swedish School all within walking distance.





Total area (approx.): 91.3 sq. m (982.7 sq. ft)

**Marsh & Parsons Barnes**  
73-75 Church Road, London,  
SW13 9HH  
020 8563 8333

We aim to make our particulars both accurate and reliable. However, they are not guaranteed; nor do they form part of an offer or contract. If you require clarification on any points then please contact us, especially if you're traveling some distance to view. Please note that appliances and heating systems have not been tested and therefore no warranties can be given as to their good working order.