

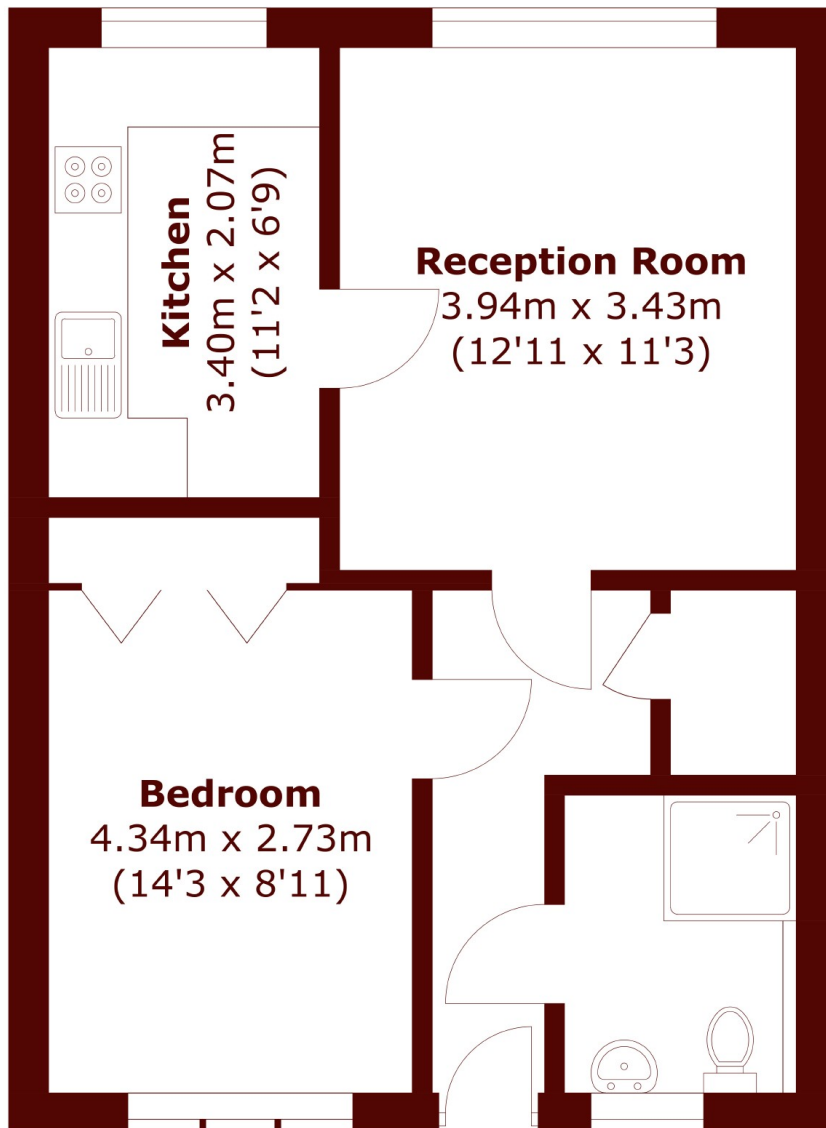


Cedars Court, SW15

£175,000



- Over 55s development
- One Bedroom Apartment
- Lift Access
- Communal Gardens
- Top Floor
- Off Street Parking



Total area (approx.): 44.7 sq. m (481.1 sq. ft)

Marsh & Parsons Barnes

73-75 Church Road, London,
SW13 9HH
020 8563 8333