



Fleet Road | | Fleet | GU51 3PD

Offers In Excess Of £205,000 Leasehold



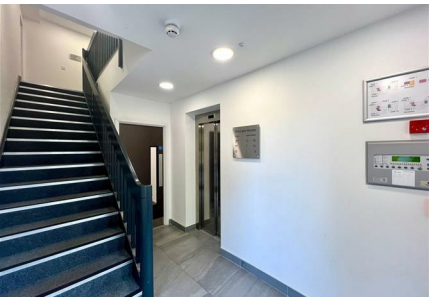
Fleet Road |  
Fleet | GU51 3PD  
Offers In Excess Of £205,000

Offered to the market with no onward chain complications is this excellently presented, modern 1-bedroom ground floor apartment within walking distance of Fleet high street and Fleet station.

- 1 Bedroom Apartment
- No Onward Chain
- Town Center Location
- Video Entryphone System
- Stunning Condition
- Bosch and Neff Built-In Appliances
- Allocated Parking
- Council Tax Band: B

This 1-bedroom ground floor apartment is presented in excellent condition throughout. As you enter the property you will find the large kitchen / living / dining room. The kitchen has many benefits including modern built-in Bosch and Neff appliances, ivory stone kitchen units, integrated recycling bin and Hannex white moulder worktop. The bathroom continues this theme with Hannex white moulded worktop and sink, LED mirror and wall mounted shower. You will also find a large double bedroom. The apartments has LED downlights, brushed chrome sockets and USB points throughout.



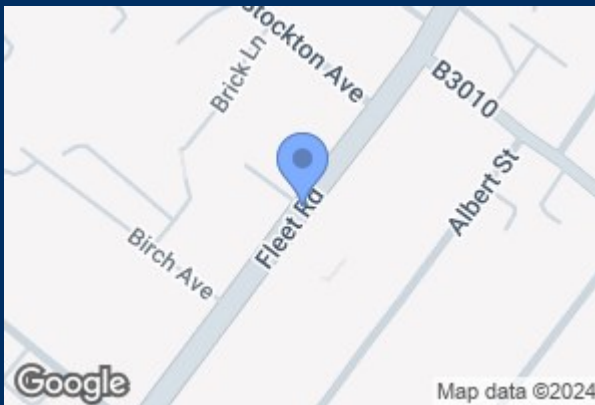


Situated on Fleet Road, this property is within walking distance to Fleet High Street and offers easy access to Fleet mainline rail station. Fleet high street boasts an array of bars, restaurants and shops including the Hart Shopping Centre. Hart Leisure Centre is also an excellent feature of Fleet, offering a wide range of facilities and home to many local sports and clubs.

Waterfords are delighted to represent this lovely apartment, and viewings are highly recommended to truly appreciate the beauty of the home and surrounding areas.

Are you looking to buy a property in Fleet? Then Waterfords Estate Agents are here to help you. As your trusted local estate agent in Surrey and Hampshire since 1995, you can ask us any questions about Fleet and the surrounding area. Feel free to pop into our branch in the Hart Centre to talk to us or call us on 01252 623333. We look forward in assisting you with buying a home in Fleet!

Are you wondering: how much is my house worth in Fleet? Waterfords Estate Agents can provide you with a home valuation based on the latest sales agreed for similar properties as well as valuable insights into buyers based on our extensive database. We take an analytical approach to ensuring that your property is priced correctly and ready to be sold quickly. All our advice is free and without obligation.



Total floor area 41.5 sq.m. (446 sq.ft.) approx

This floor plan is for illustrative purposes only. It is not drawn to scale. Any measurements, floor areas (including any total floor area), openings and orientation are approximate. No details are guaranteed, they cannot be relied upon for any purpose and they do not form part of any agreement. No liability is taken for any error, omission or misstatement. A party must rely upon its own inspection(s).

Energy Efficiency Rating		Current	Potential
Very energy efficient - lower running costs			
(12 plus) A			
(91-91) B			
(69-80) C			
(54-68) D		56	56
(39-54) E			
(21-38) F			
(1-20) G			
Not energy efficient - higher running costs			
England & Wales		EU Directive 2002/91/EC	



39 The Hart Centre  
Fleet  
Hampshire  
GU51 3LA  
01252 623333

fleet@waterfords.co.uk