



Mysore Road, SW11

£675,000

2 2 1 D

- Two Bedrooms
- Two Bathrooms
- Share Of Freehold
- Quiet Residential Road
- Close To Transport
- Chain Free



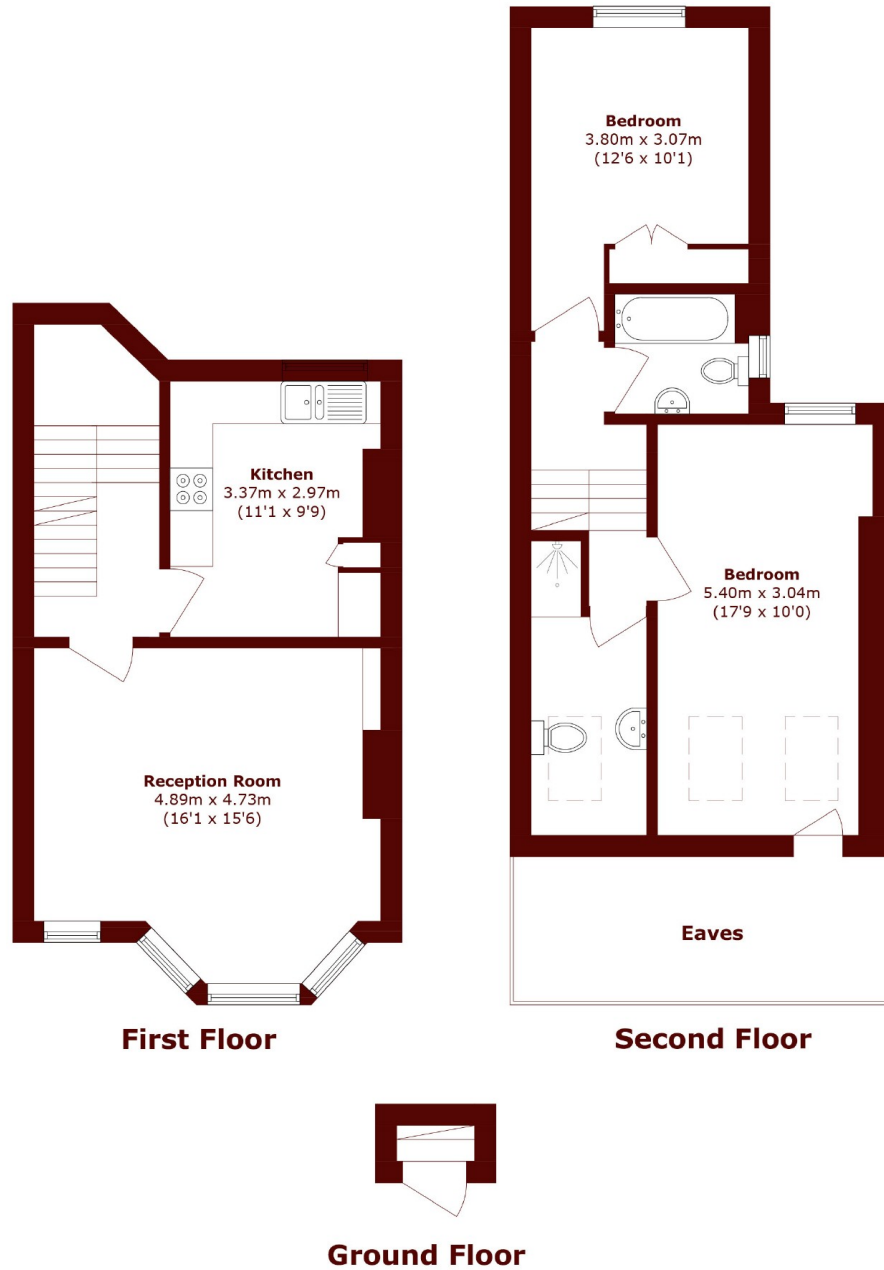


ABOUT THE PROPERTY

A fabulous two bedroom, two bathroom split level Victorian flat measuring in excess of 920 sq ft. It has a lovely, large living room with a bay window, feature fireplace and fitted cabinetry. There is separate kitchen with plenty of worktop and cupboard space.

Mysore Road is a lovely residential street on the north side of Clapham Common. It is located with convenient access to Clapham Junction Station. The amenities of Lavender Hill and Northcote Road are close by along with the open spaces of Clapham Common. Council Tax Band- E





Total area (approx.): 85.6 sq. m (921.3 sq. ft)
(Excluding Eaves)

Marsh & Parsons Battersea
118 Northcote Road, London,
SW11 6QP
020 8673 4377

We aim to make our particulars both accurate and reliable. However, they are not guaranteed; nor do they form part of an offer or contract. If you require clarification on any points then please contact us, especially if you're traveling some distance to view. Please note that appliances and heating systems have not been tested and therefore no warranties can be given as to their good working order.