



Prince Of Wales Mansions, SW11

£700,000

 2  1  1  D

- Two Bedrooms
- Ground Floor
- Mansion Block
- Opposite Battersea Park
- No Onward Chain
- Close To Transport Links



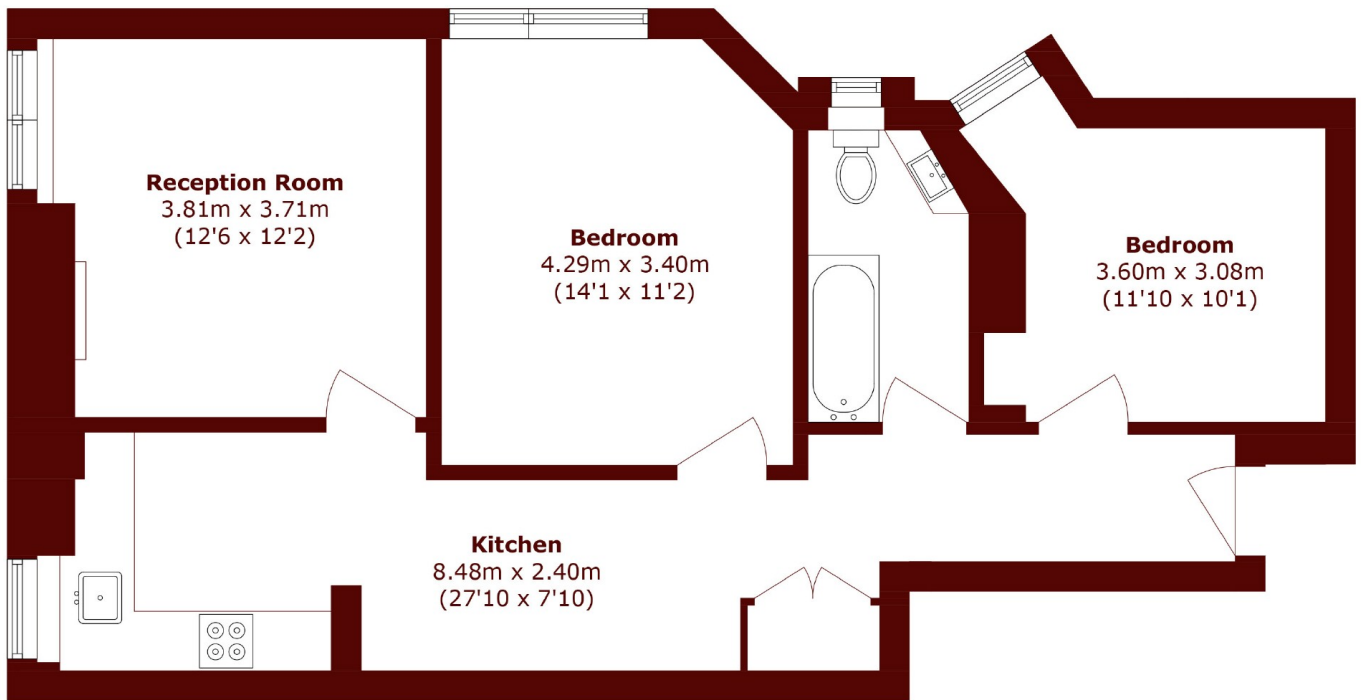


ABOUT THE PROPERTY

OIEO £700,000. A fabulous two double bedroom ground floor apartment measuring 757 sq ft in a popular mansion block overlooking Battersea Park. It has a modern kitchen and bathroom, a dining area and a separate sizeable living room and is being sold chain free.

Prince Of Wales Drive is a quiet road running along the south side of Battersea Park with convenient access to the northern line at Battersea Power Station, and Queenstown Road and Battersea Park train stations. The amenities of Battersea Power Station are close by along with the Pear Tree Cafe in Battersea Park. Council Tank Band- E





Total area (approx.): 70.4 sq. m (757.7 sq. ft)

Marsh & Parsons Battersea
118 Northcote Road, London,
SW11 6QP
020 8673 4377

We aim to make our particulars both accurate and reliable. However, they are not guaranteed; nor do they form part of an offer or contract. If you require clarification on any points then please contact us, especially if you're traveling some distance to view. Please note that appliances and heating systems have not been tested and therefore no warranties can be given as to their good working order.