



Holmside Road, SW12

£1,595,000

4 3 1 D

- Four Bedrooms
- Two Bathrooms

- Semi Detached
- Edwardian

- Garage
- Quiet Residential Road





ABOUT THE PROPERTY

An exceptional four bedroom, semi detached Edwardian home which is located just off Nightingale Lane. There is a lovely landscaped garden and a garage.

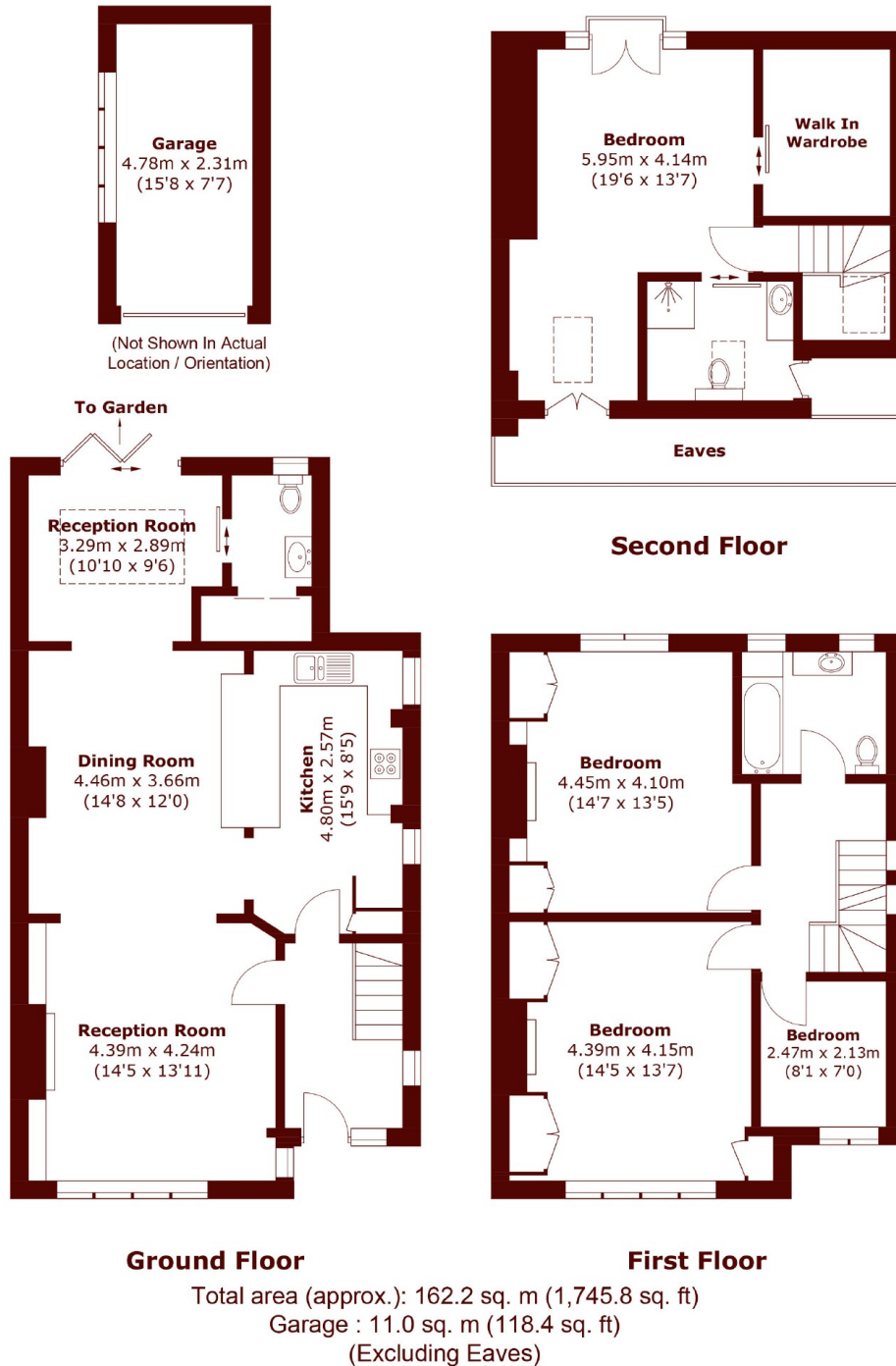
The house is approached through a mature front garden and the front door opens into a spacious entrance hall. To the left is a fantastic living room with the lovely Edwardian proportions that you would expect, this flows through to an open plan, modern kitchen and dining room. An extension to the rear gives a further reception space and a downstairs shower room.

The first floor has two spacious double bedrooms, both with fitted wardrobes either side of the chimney breasts. There is also a third bedroom on this floor and all are served by a modern family bathroom which has a shower over the bath. The loft has been converted to create an very well thought out primary suite with plenty of light, a en-suite shower room and a walk in wardrobe.

To the rear of the property is a mature private garden made up of a decked area for dining and a lawned area. There is also access to a single garage.

Holmside Road is a quiet tree lined street which is located Between The Commons and just off





Marsh & Parsons Battersea

118 Northcote Road,
London, SW11 6QP
020 8673 4377