



Westwick Gardens, W14

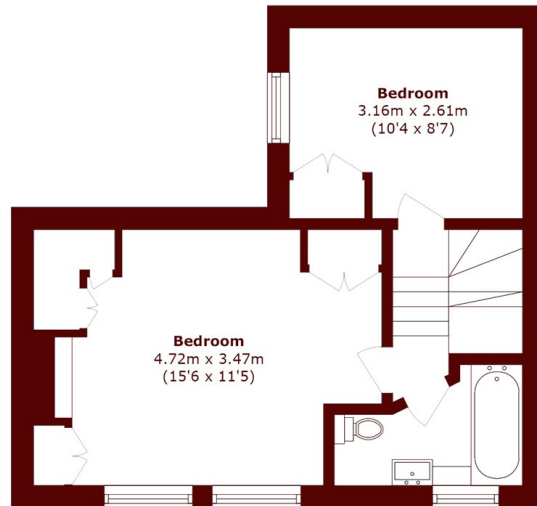
£860,000



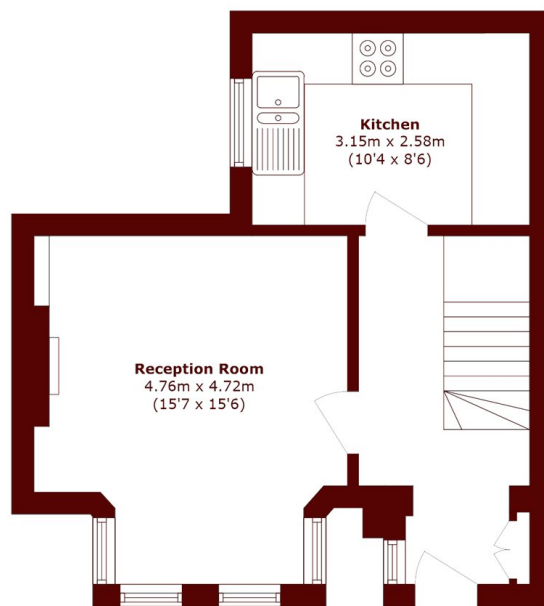
- Two Bedrooms
- One Bathroom

- Split Level
- Quiet Location

- No Onwards Chain
- Own Entrance



First Floor



Ground Floor

Total area (approx.): 70.6 sq. m (759.9 sq. ft)

Marsh & Parsons Brook Green

107-109 Shepherds Bush
Road, London, W6 7LP
020 7605 7765

We aim to make our particulars both accurate and reliable. However, they are not guaranteed; nor do they form part of an offer or contract. If you require clarification on any points then please contact us, especially if you're traveling some distance to view. Please note that appliances and heating systems have not been tested and therefore no warranties can be given as to their good working order.