



Lime Grove, W12

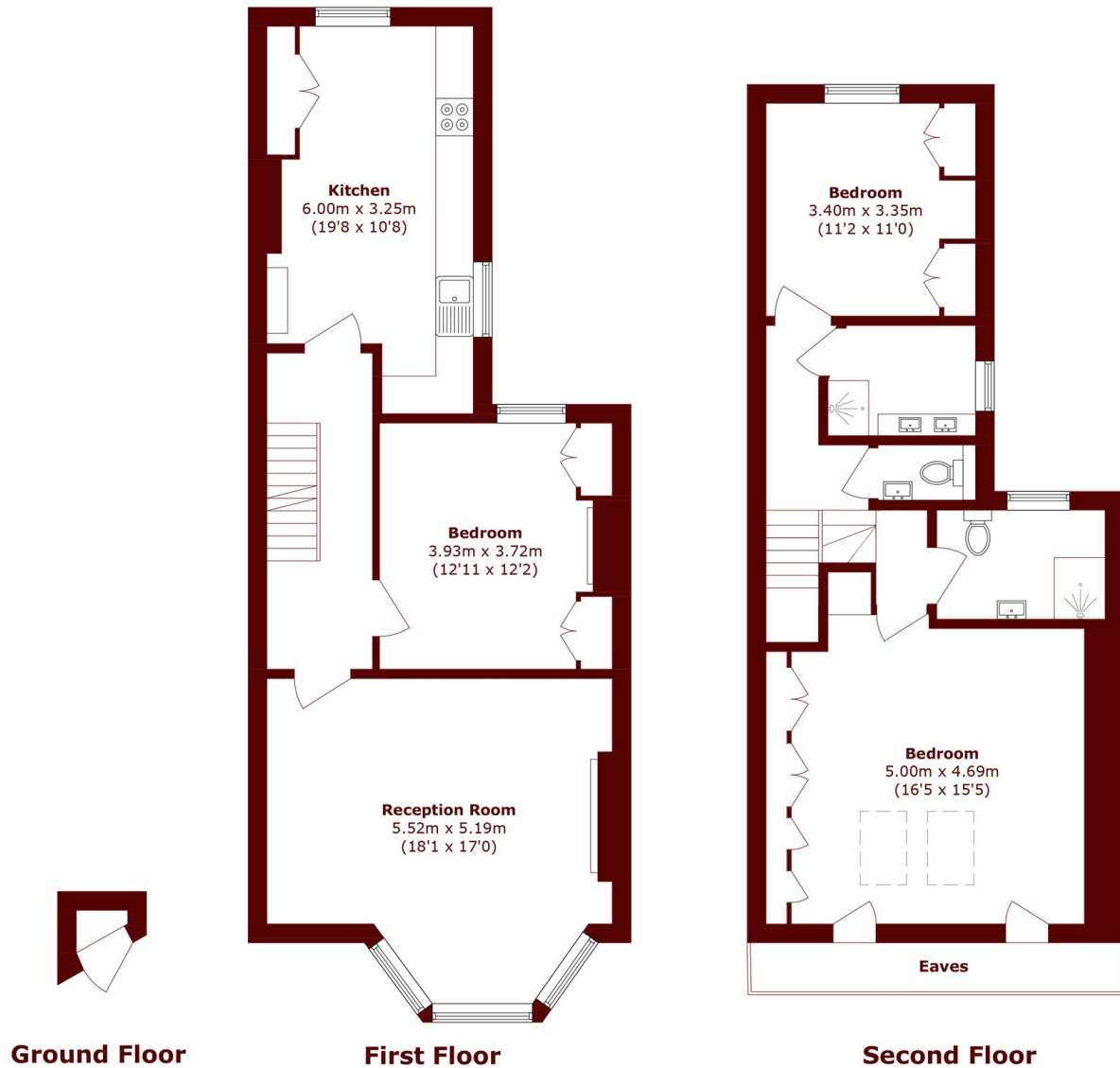
£950,000



- Three Bedrooms
- Separate Kitchen

- Split Level
- Modern Finish

- No Onwards Chain
- Westfield Shopping Centre



Total area (approx.): 126.2 sq. m (1358.4 sq. ft)
(Excluding Eaves)

Marsh & Parsons Brook Green

107-109 Shepherds Bush
Road, London, W6 7LP
020 7605 7765