



Devonport Road, W12

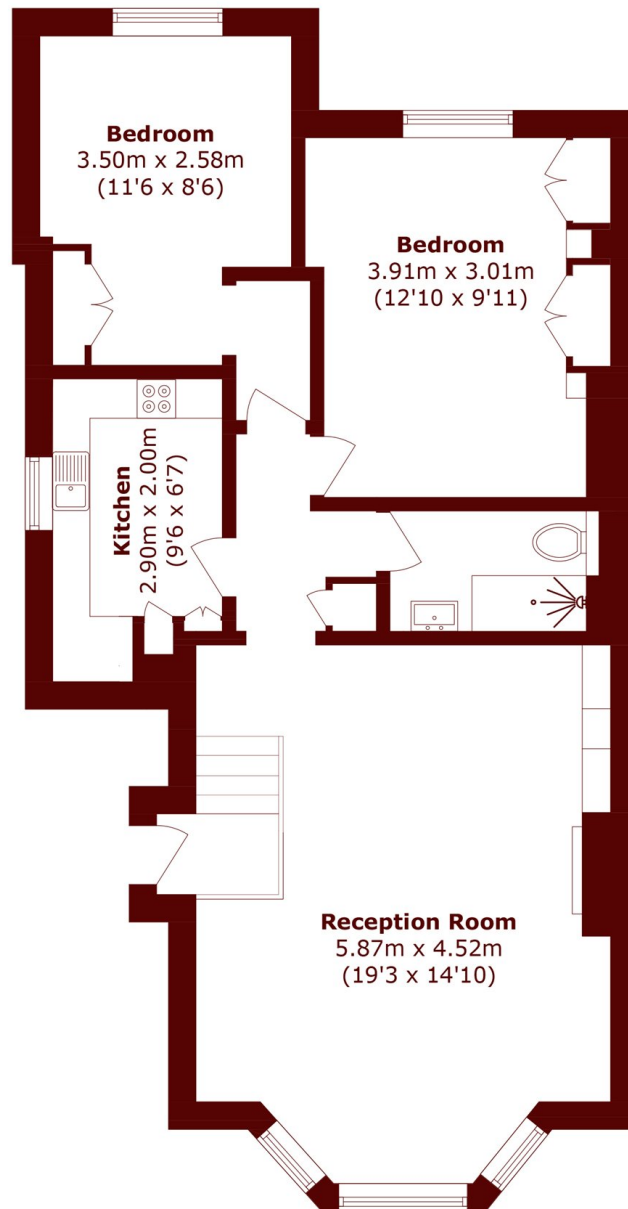
£499,999



- Two Bedrooms
- Raised Ground Floor

- Share of Freehold
- Quiet Location

- No Onwards Chain
- Westfield Shopping Centre



Total area (approx.): 61.7 sq. m (664.1 sq. ft)

Marsh & Parsons Brook Green

107-109 Shepherds Bush
Road, London, W6 7LP
020 7605 7765