

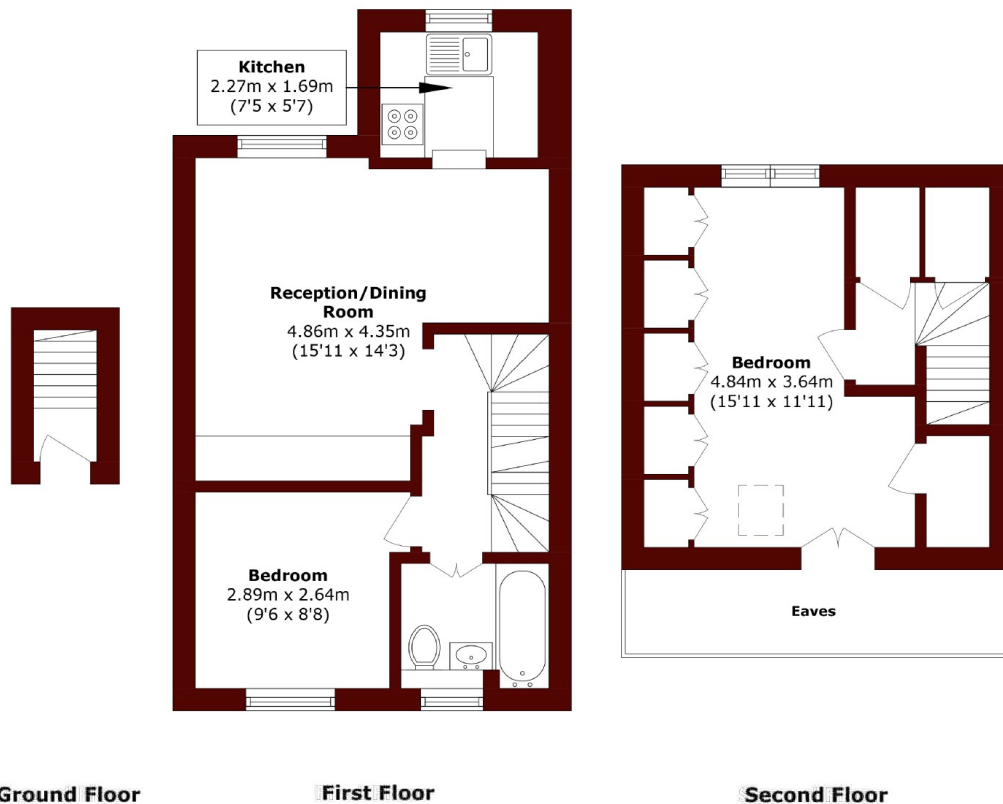


Southcombe Street, W14

£549,950



- Two Bedrooms
- Naturally Bright
- Close To Transport
- Split Level
- Kensington Olympia
- Quiet Location



Total area (approx.): 61.6 sq. m (663.0 sq. ft)
(Excluding Eaves)

Marsh & Parsons Brook Green

107-109 Shepherds Bush
Road, London, W6 7LP
020 7605 7765