



## Bolingbroke Road, W14

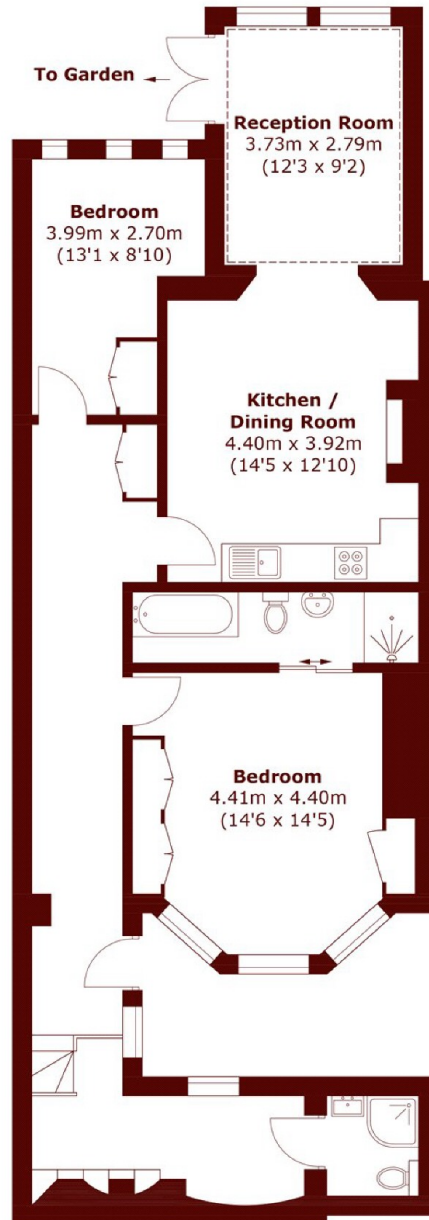
£800,000



- Two Bedrooms
- Two Bathrooms

- Private Garden
- Open Plan Living

- Quiet Location
- Kensington Olympia



Total area (approx.): 91.1 sq. m (980.6 sq. ft)

## Marsh & Parsons Brook Green

107-109 Shepherds Bush  
Road, London, W6 7LP  
020 7605 7765