



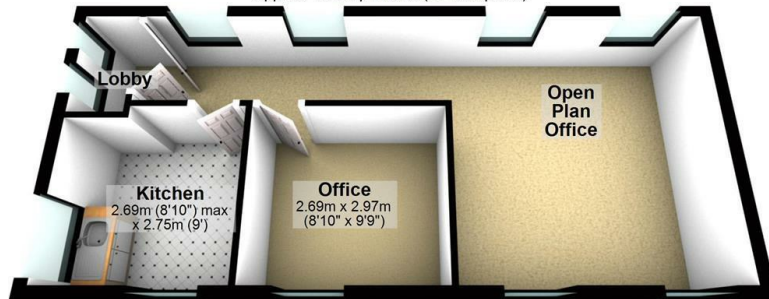
Office Suite, 14 Causeway Head Road, Dore, Sheffield, £10,000 Per Annum

- Self contained office suite
- 538 sqft / 50 sqm
- In the heart of Dore Village
- Well Presented
- uPVC DG/GCH

Ground Floor
Approx. 7.3 sq. metres (78.9 sq. feet)

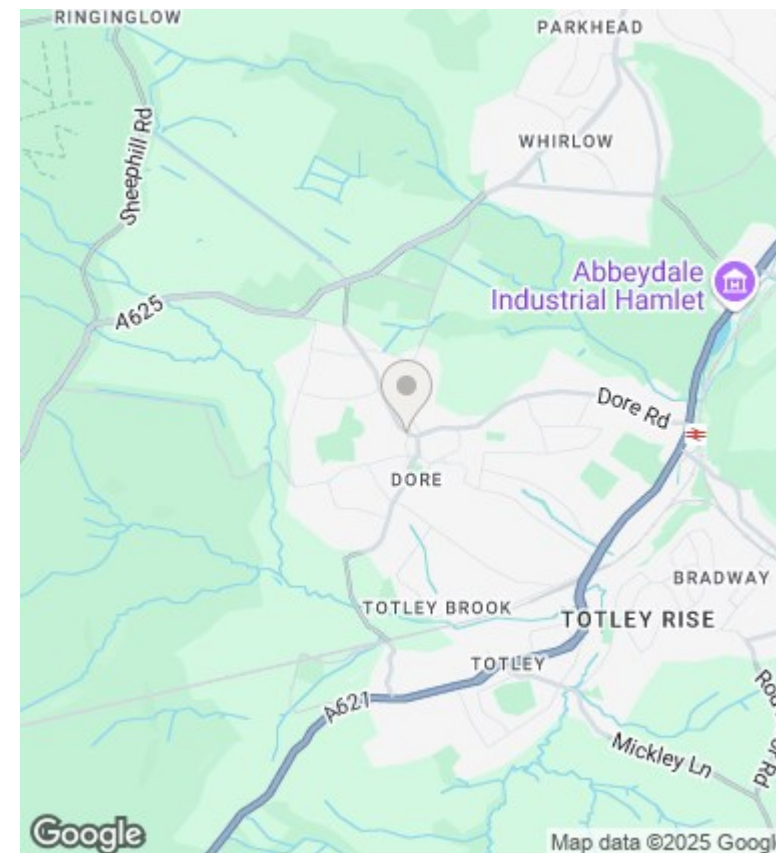


First Floor
Approx. 43.1 sq. metres (464.3 sq. feet)



Total area: approx. 50.5 sq. metres (543.2 sq. feet)

Whilst every care has been taken to prepare these floor plans, they are for guidance purposes only.
Plan produced using PlanUp.



Directions

Viewings

Viewings by arrangement only. Call 0114 283 4050 to make an appointment.

Council Tax Band

EPC Rating:

Energy Efficiency Rating		
	Current	Potential
Very energy efficient - lower running costs		
(92-plus) A		
(81-91) B		
(69-80) C		
(55-68) D		
(39-54) E		
(21-38) F		
(1-20) G		
Not energy efficient - higher running costs		
England & Wales	EU Directive 2002/91/EC	