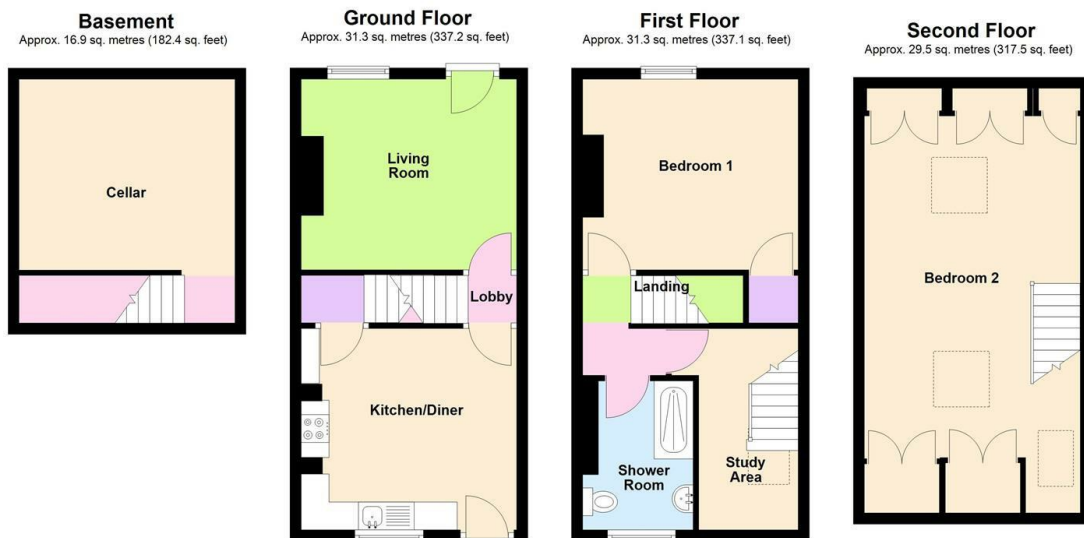


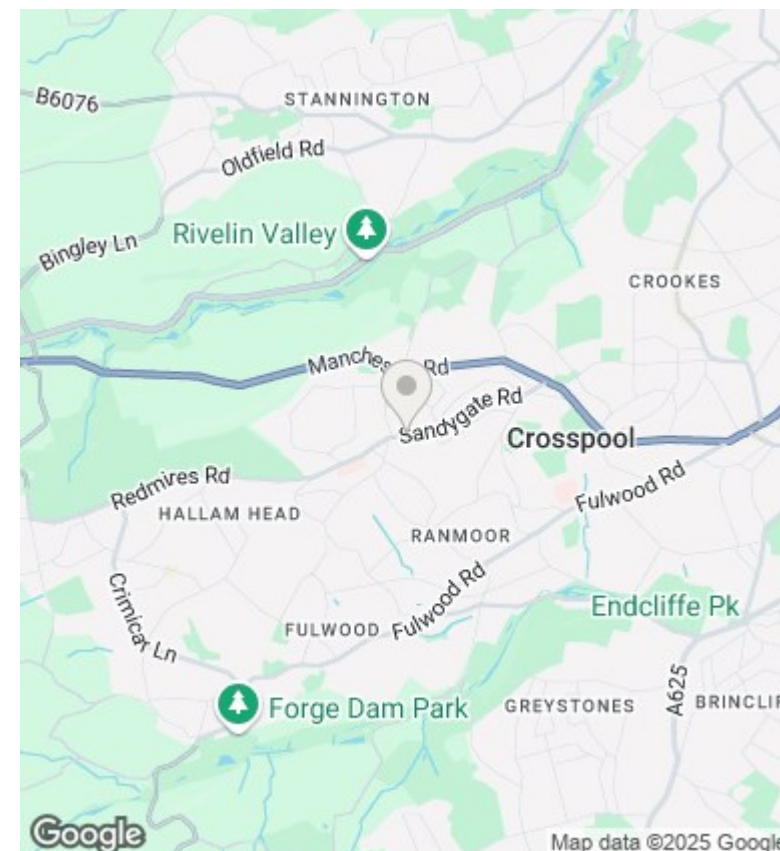


261 Sandygate Road, Sheffield, South Yorkshire, S10

£995 PCM



261 Sandygate Road, Sheffield



Directions

Viewings

Viewings by arrangement only. Call 0114 283 4050 to make an appointment.

Council Tax Band

B

EPC Rating:

D

Energy Efficiency Rating		
	Current	Potential
Very energy efficient - lower running costs		
(92 plus) A	58	85
(81-91) B		
(69-80) C		
(55-68) D		
(39-54) E		
(21-38) F		
(1-20) G		
Not energy efficient - higher running costs		
England & Wales		EU Directive 2002/91/EC