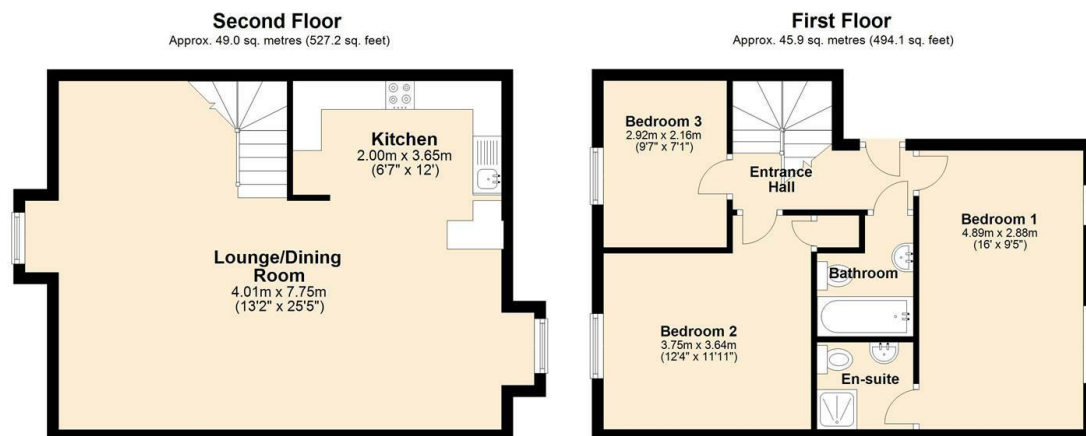




36 Queenswood Road, Wadsley Park Village, Sheffield,

Offers In The Region Of £190,000

- Duplex Apartment
- Well Proportioned Accommodation
- Well Presented Throughout
- Ideal for FTBs
- Three Bedrooms, Two Bathrooms
- uPVC DG
- Close to Open Countryside
- Popular Residential Location
- Electric Heating
- Garage



Total area: approx. 94.9 sq. metres (1021.2 sq. feet)
 Whilst every care has been taken to prepare these floor plans, they are for guidance purposes only.
 Plan produced using PlanUp.



Directions

Viewings

Viewings by arrangement only. Call 0114 283 4050 to make an appointment.

Council Tax Band

C

EPC Rating:

C

Energy Efficiency Rating		
	Current	Potential
Very energy efficient - lower running costs		
(92 plus) A		
(81-91) B		79
(69-80) C	70	
(55-68) D		
(39-54) E		
(21-38) F		
(1-20) G		
Not energy efficient - higher running costs		
England & Wales	EU Directive 2002/91/EC	