

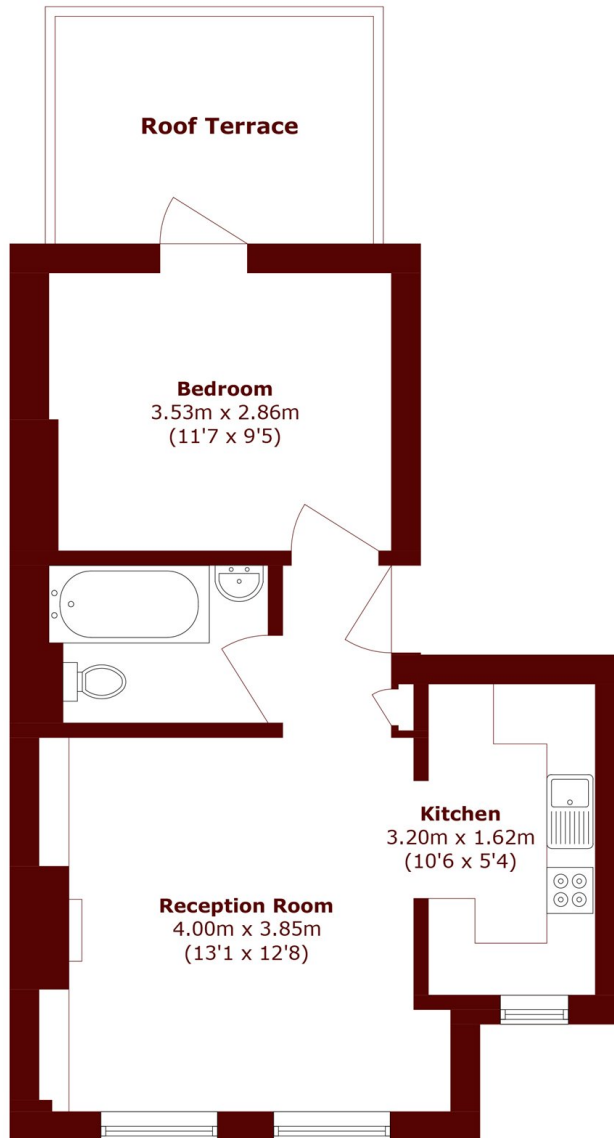


Victoria Rise, SW4

£420,000



- Share of freehold
- Well presented throughout
- Close to Clapham Common
- Private roof terrace
- High ceilings & period features
- Cusp of Old Town



Total area (approx.): 38.7 sq. m (416.5 sq. ft)

Terrace area (approx.): 7.6 sq. m (81.8 sq. ft)

Marsh & Parsons Clapham

28 Old Town, London, SW4

OLB

020 7501 3666